

U 96

U-BOAT

Pack 30

Assembly Instructions

Kit 117: The next hull section

Kit 118: A starboard hull section

Kit 119: A portside hull section

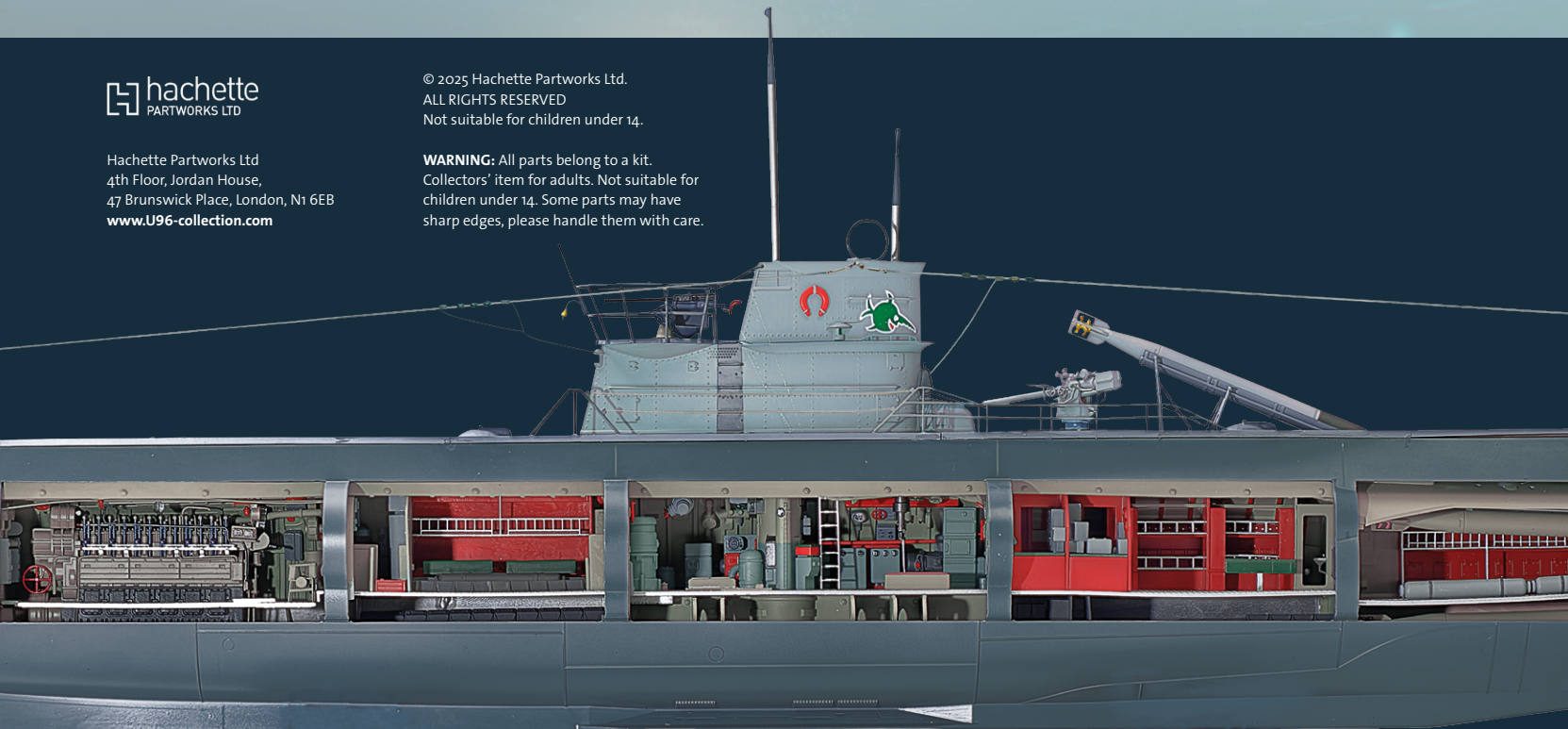
Kit 120: Model stand (I)



Hachette Partworks Ltd
4th Floor, Jordan House,
47 Brunswick Place, London, N1 6EB
www.U96-collection.com

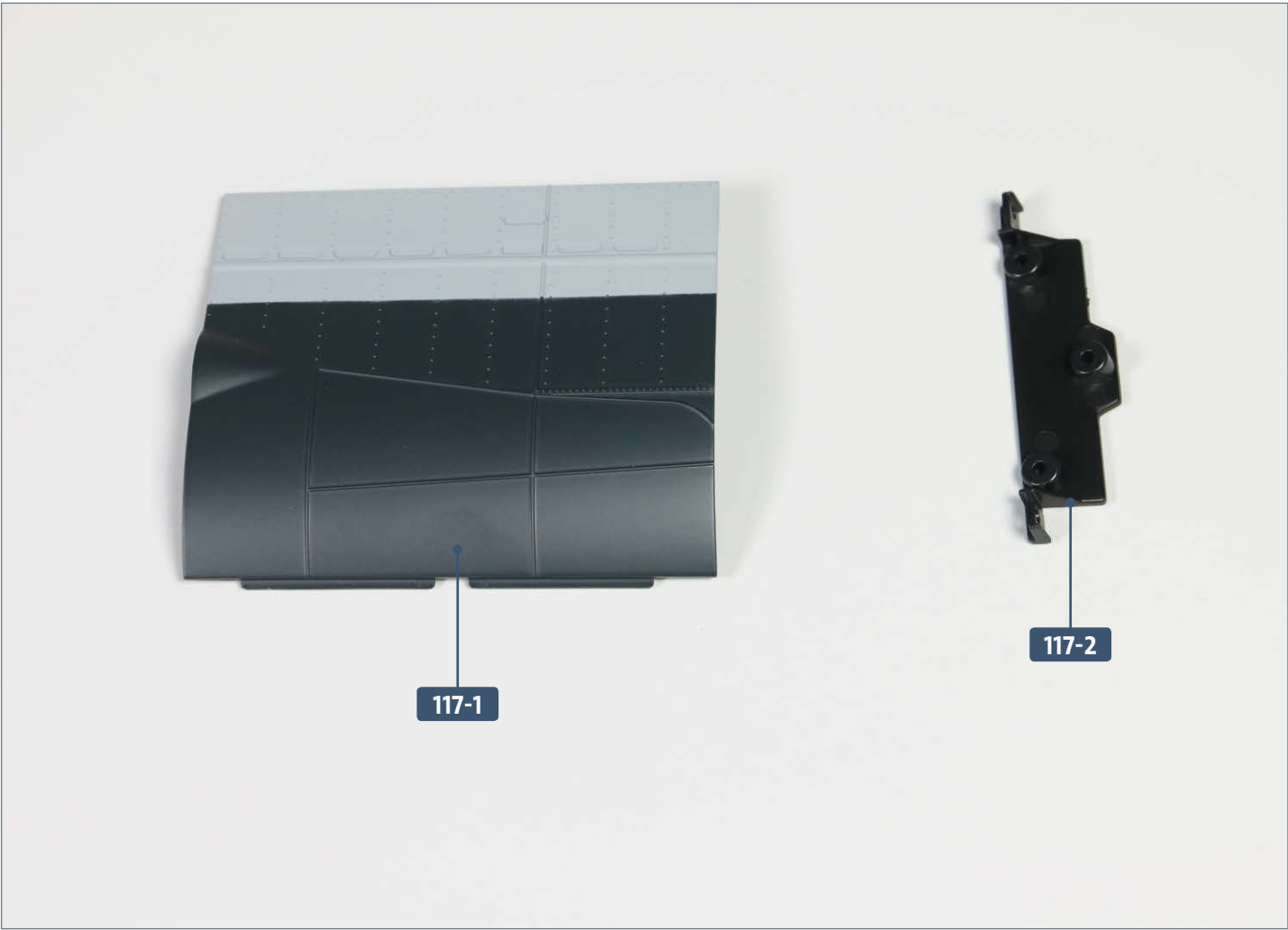
© 2025 Hachette Partworks Ltd.
ALL RIGHTS RESERVED
Not suitable for children under 14.

WARNING: All parts belong to a kit.
Collectors' item for adults. Not suitable for
children under 14. Some parts may have
sharp edges, please handle them with care.

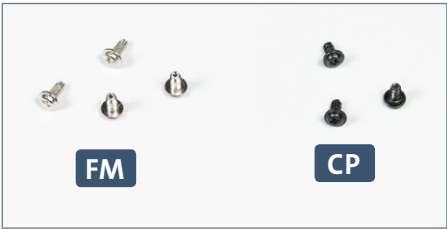


Kit 117: The next hull section

In this kit, a portside (L) hull section is first fitted with a connector before being added to the main structure.



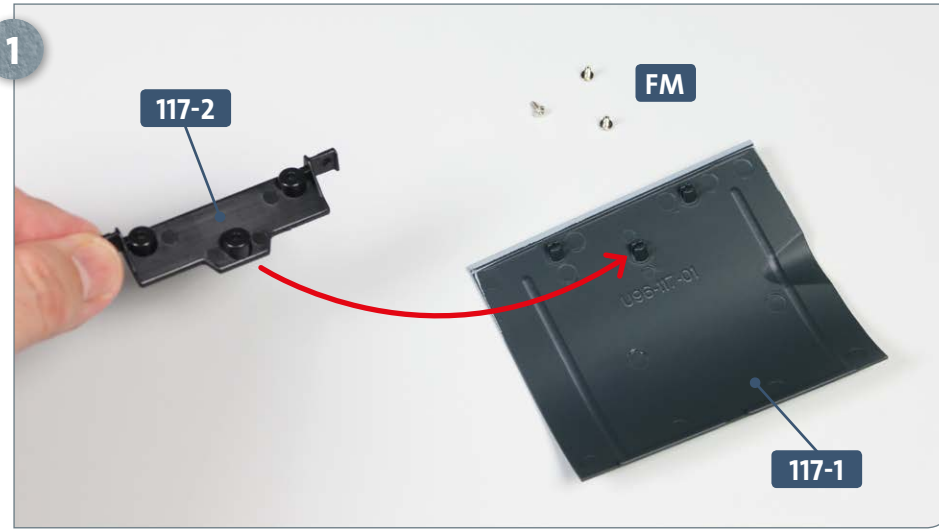
Parts reference list	
Part no.	Name
117-1	Port (L) hull section
117-2	Connector



Screws		
Ref	No.	Dimensions
FM	3 + 1	2 x 4 mm
CP	2 + 1	2 x 4 mm

Kit 117: The next hull section

STAGE 1 → Adding the hull section



Place the port (L) hull section **117-1** with the inner side facing up on your work surface and have ready three **FM** screws. Take the connector **117-2** and fit it onto the hull section as directed by the arrow.

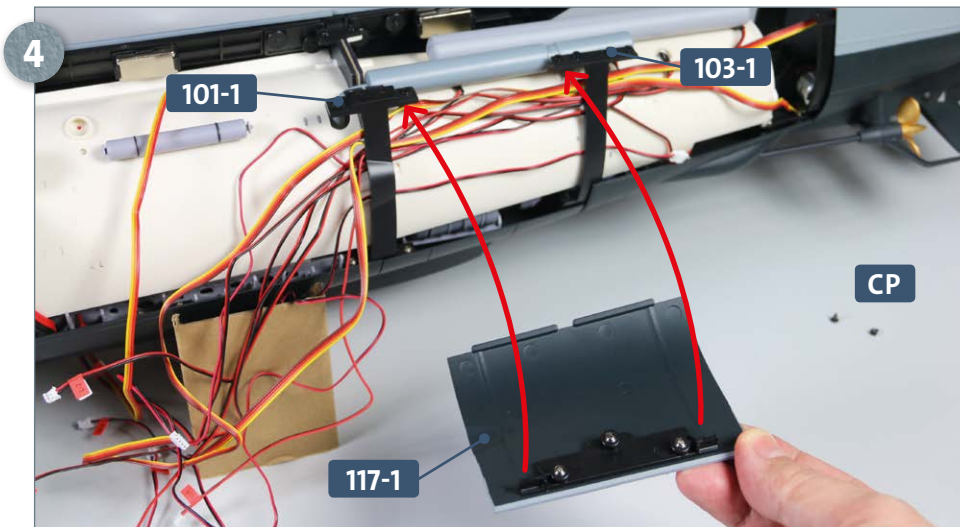


This photograph shows the connector **117-2** correctly situated on the inner side of the hull section **117-1**.

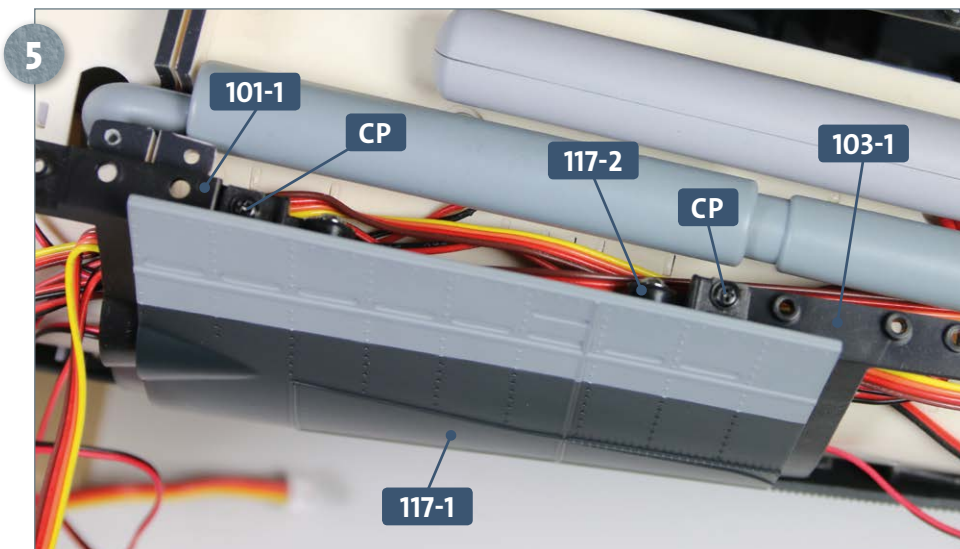


Now fix the connector **117-2** in place with three **FM** screws, as pictured.

Kit 117: The next hull section

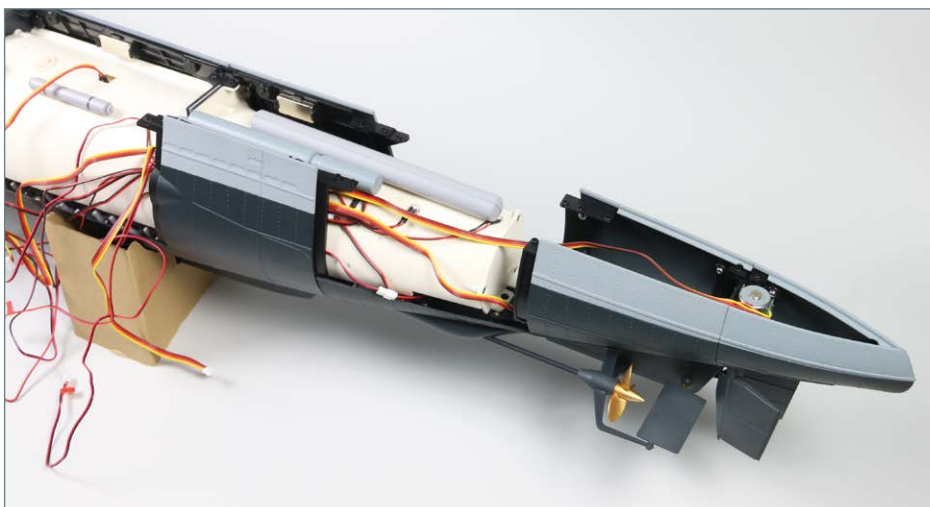


Place the model on your worktop so that you have access to the port (L) side. Have ready two **CP** screws. Placing the lip of the hull section **117-1** on the edge of the keel at the aft end of the sixth compartment, tilt the hull plate upwards towards the two connectors, **101-1** and **103-1**, as indicated by the arrows, left.



Fix the connector **117-2** (the one you attached to the hull section **117-1**) to the other two connectors **101-1** and **103-1** using one **CP** screw on each part.

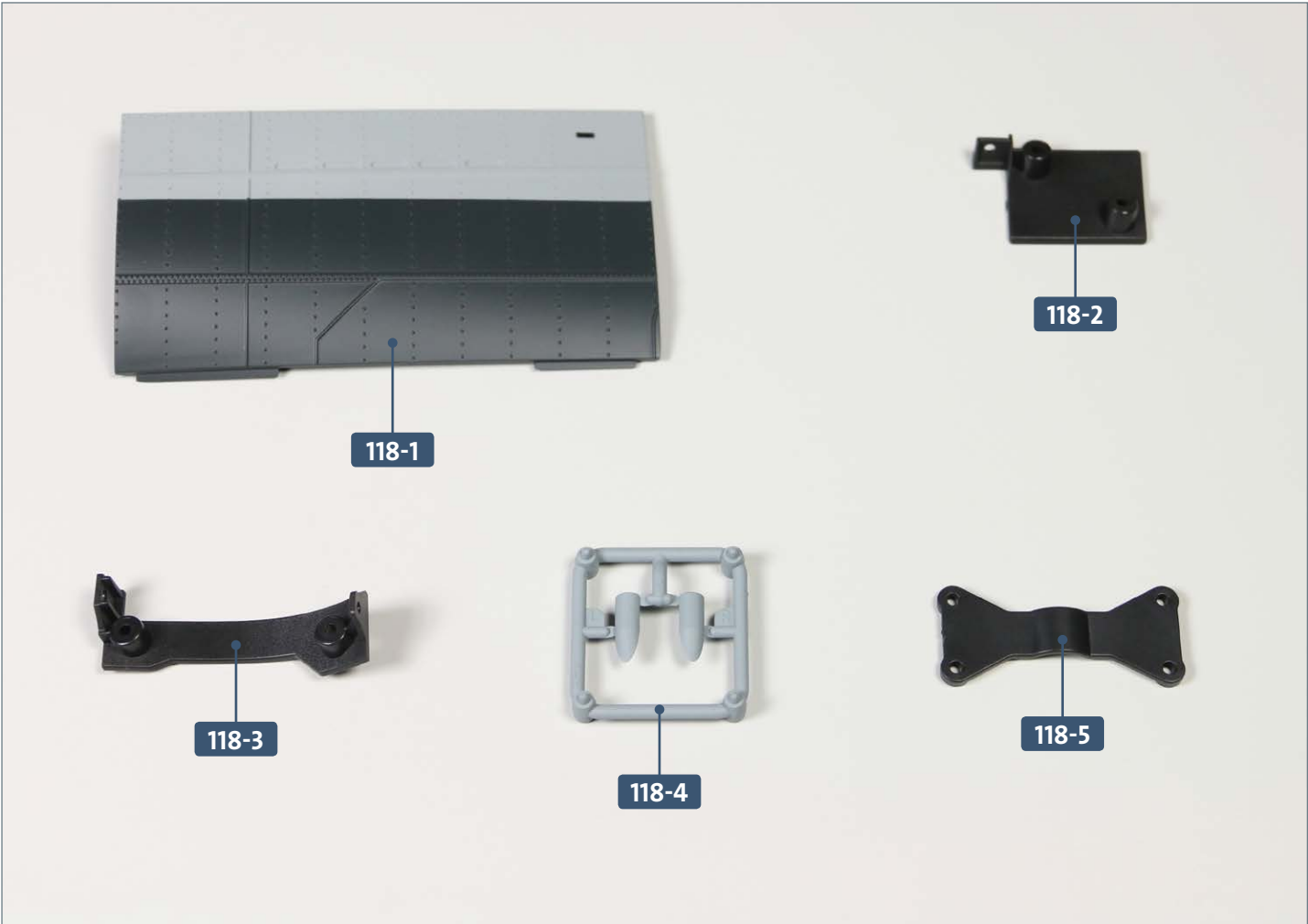
COMPLETED WORK



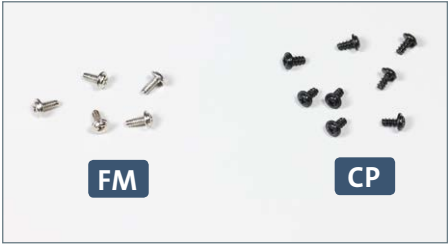
A new hull plate has now been added to the port (L) side of the hull.

Kit 118: A starboard hull section

In this kit, you will attach two connectors and an exhaust to a starboard (R) hull section, which is then attached to the main structure. A crossmember is also fitted.



Parts reference list	
Part no.	Name
118-1	Starboard (R) hull section
118-2	Connector
118-3	Connector
118-4	Exhausts (L, R)
118-5	Crossmember

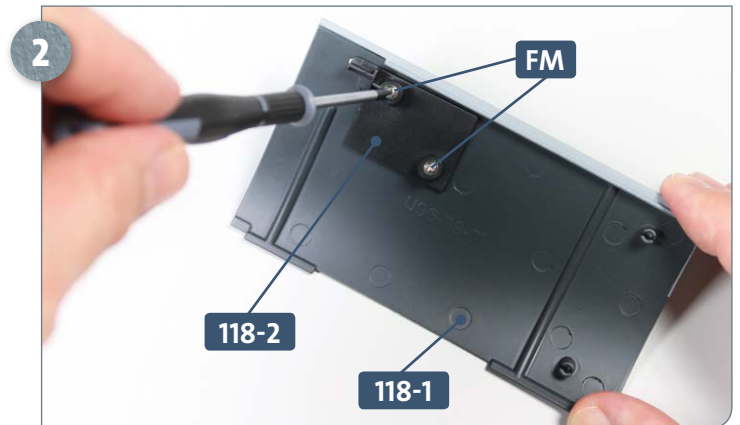


Screws		
Ref	No.	Dimensions
FM	4 + 1	2 x 4 mm
CP	7 + 1	2 x 4 mm

STAGE 1 → Fitting the hull section



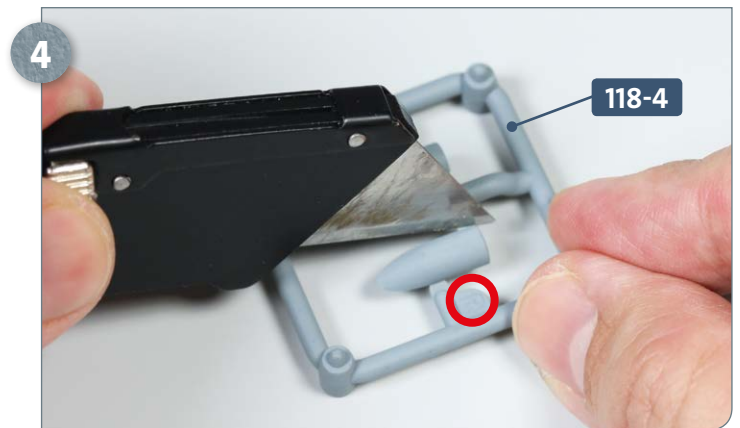
Place the starboard (R) hull section **118-1**, connectors **118-2** and **118-3** and four **FM** screws on your work surface. Fit connector **118-2** onto the inner surface of the hull section as directed.



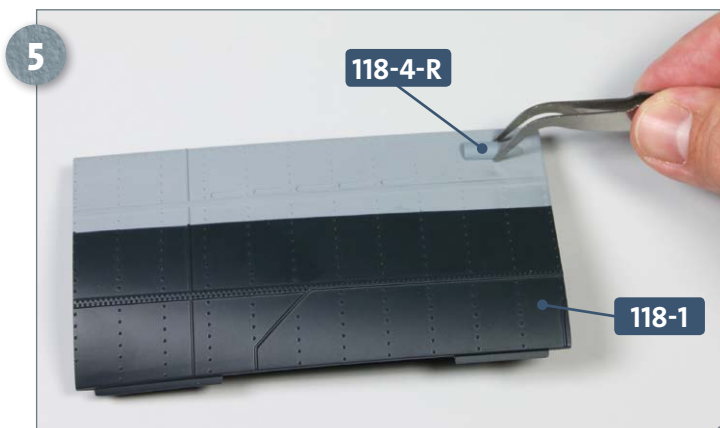
Fix the connector **118-2** in place using two **FM** screws, as shown.



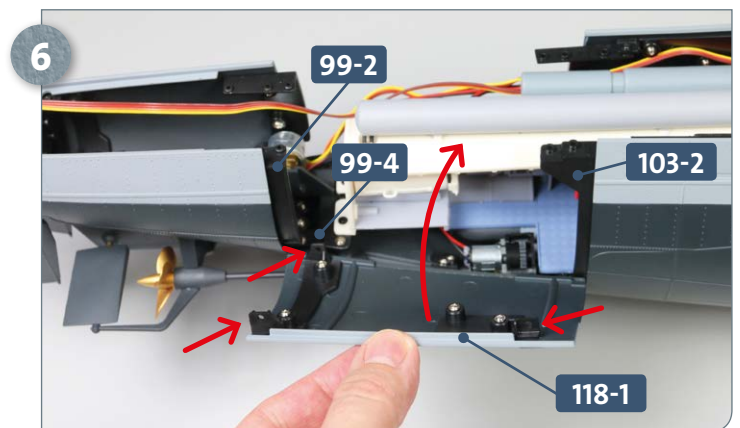
Position connector **118-3** over the remaining raised sockets on the inside of the hull section **118-1** and use the two remaining **FM** screws to fix in place.



Take frame **118-4** with the two exhausts. Use a craft knife to remove the right exhaust, marked with a letter **R** on the frame (see red circle).

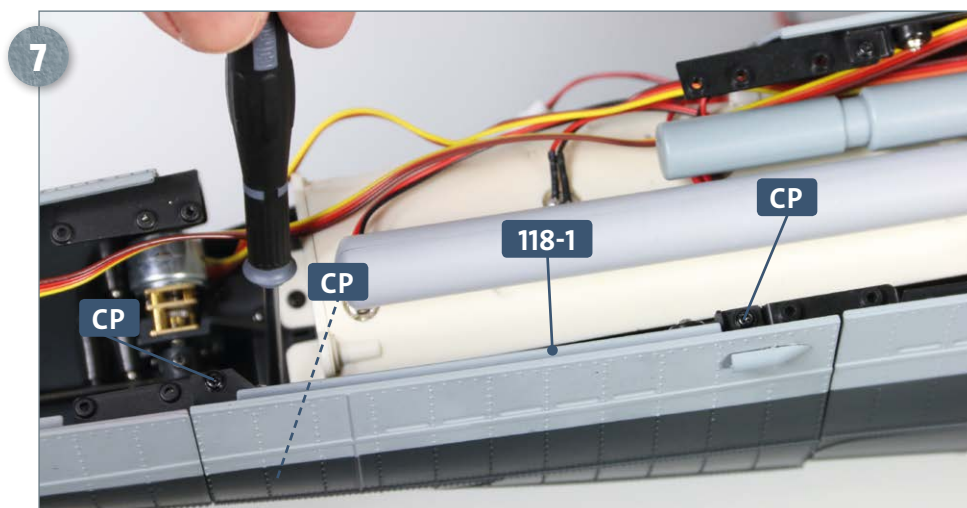


Apply a little glue to the peg on the inside of the right exhaust **118-4-R**. Fit the exhaust into the slot in the hull section **118-1**, oriented as pictured.



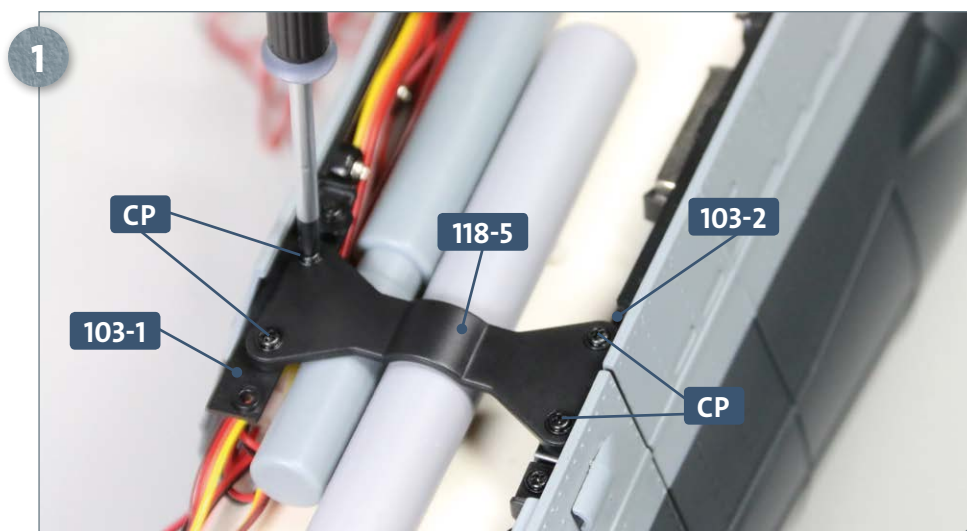
Position the hull section **118-1** on the starboard (R) side of your model. The holes of the connectors (indicated by the three straight arrows) align with the holes in connectors **99-2**, **99-4** and **103-2**.

Kit 118: A starboard hull section

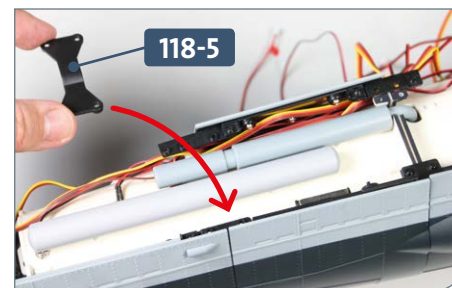


Join the hull section **118-1** to the main structure using three **CP** screws, one each onto connectors **99-2**, **99-4** and **103-2**. Note that one of the **CP** screws cannot be seen and is located at the bottom end of the screwdriver.

STAGE 2 → Installing the crossmember



Position the crossmember **118-5** over the silencer and the upper torpedo housing (see inset photograph). Attach it to the connectors **103-1** and **103-2** using two **CP** screws at each end. Take care not to overtighten the screws.



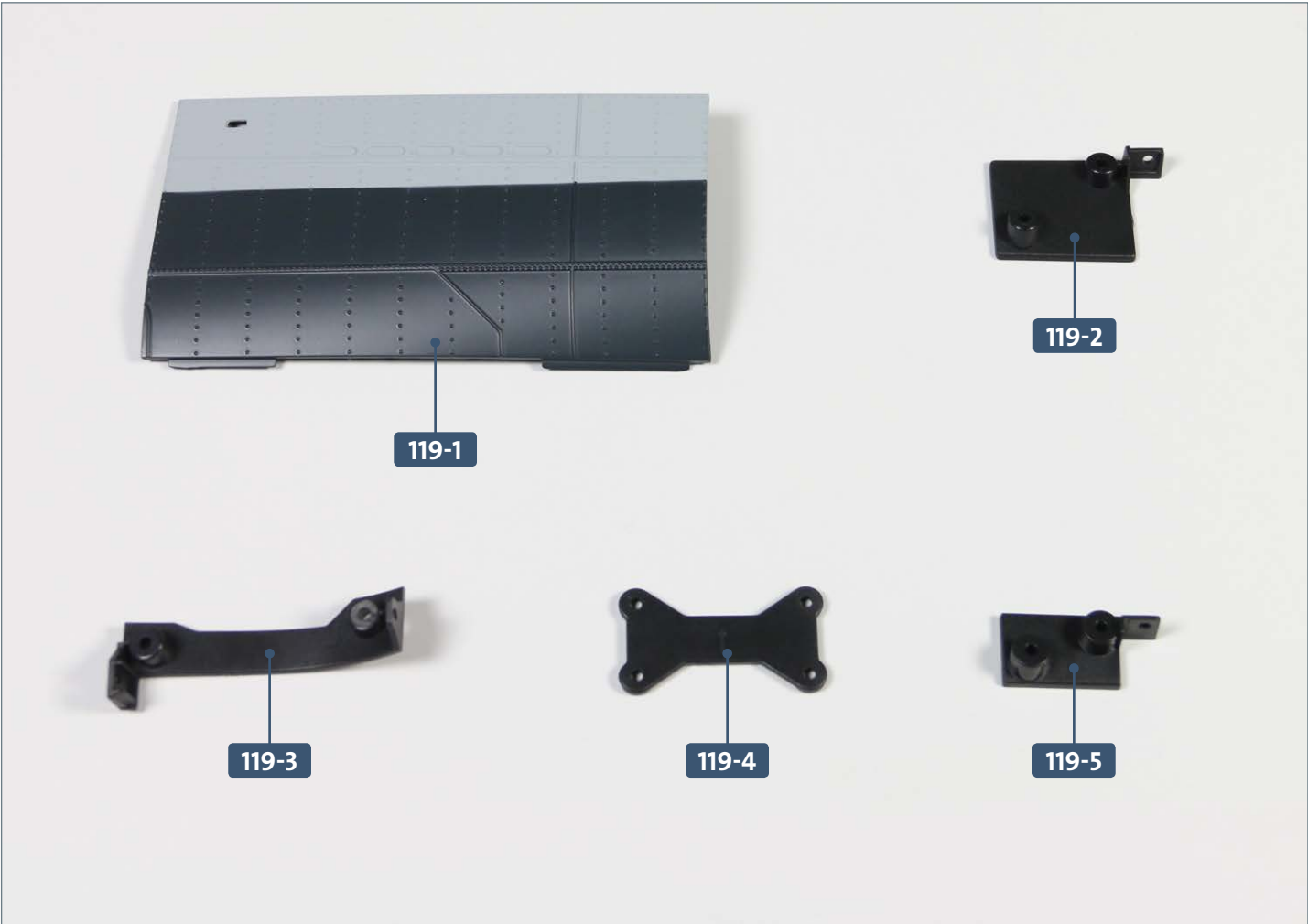
COMPLETED WORK



The starboard (R) hull plate and crossmember have now been added to your U-Boat model. Keep the exhaust (L) on frame **118-4** safely aside until it is needed in the next kit.

Kit 119: A portside hull section

In this kit, a port (L) section of the hull is fitted with two connectors and an exhaust before being added to the main structure. A crossmember is installed and a connector that was previously fitted is replaced.



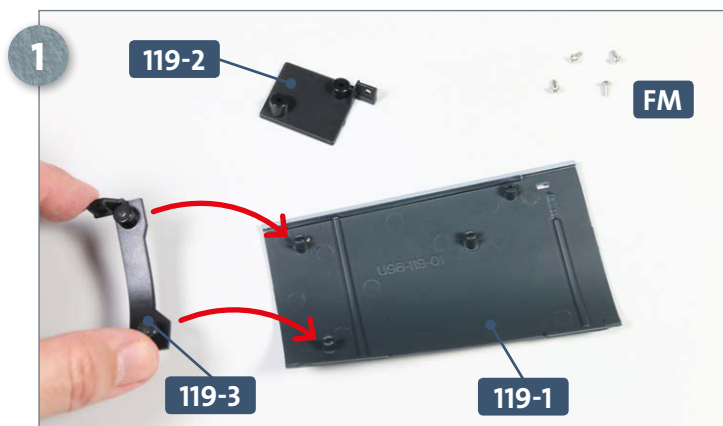
Parts reference list	
Part no.	Name
119-1	Port (L) hull section
119-2	Connector
119-3	Connector
119-4	Crossmember
119-5	Replacement connector



Screws		
Ref	No.	Dimensions
FM	4 + 1	2 x 4 mm
CP	7 + 1	2 x 4 mm

Kit 119: A portside hull section

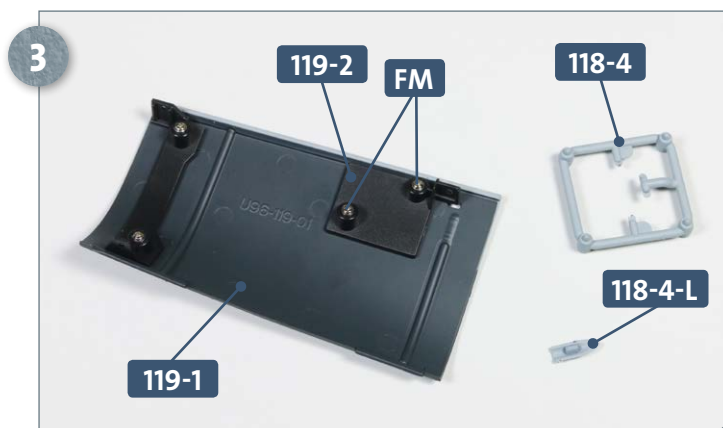
STAGE 1 → Fitting the hull section



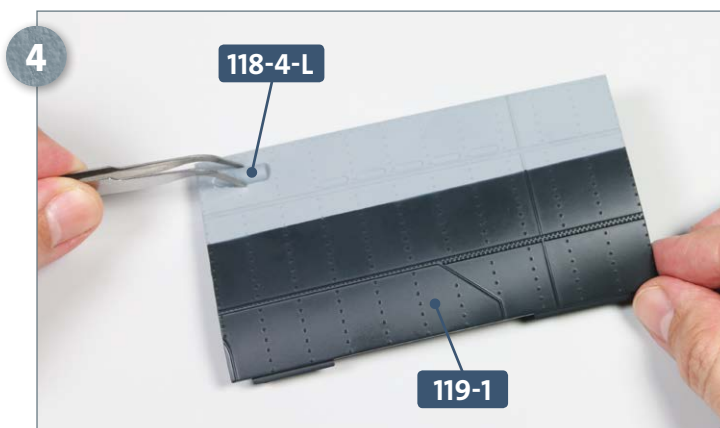
Place the port (L) hull section **119-1**, connectors **119-2** and **119-3** and four **FM** screws on your work surface. Fit connector **119-3** onto the inner side of the hull section, as pictured.



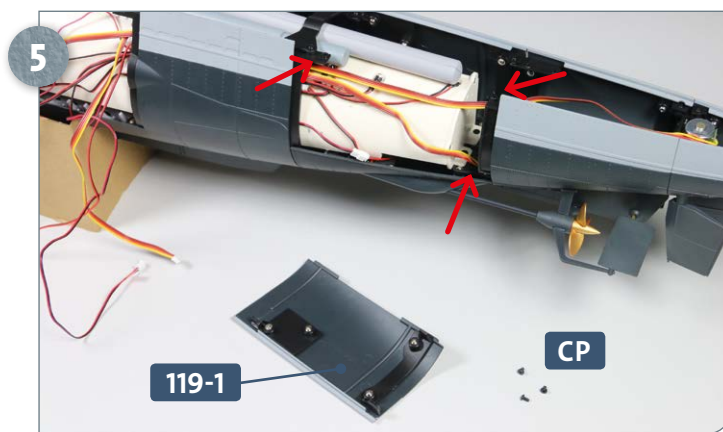
Attach the connector **119-3** with two **FM** screws, as shown above.



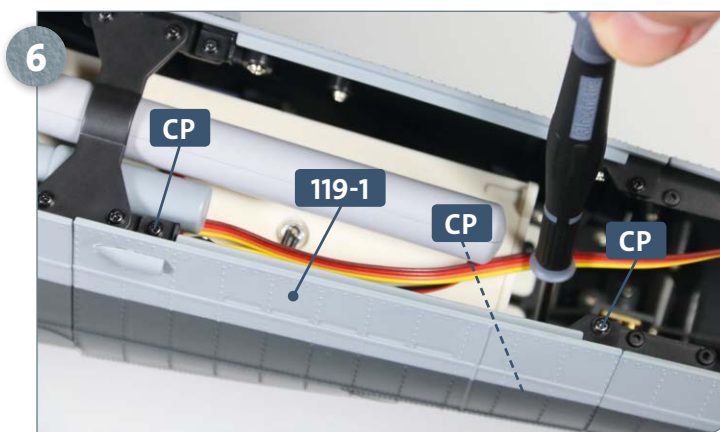
Fit connector **119-2** onto the remaining raised sockets on the inner side of the hull section **119-1** and secure in place with the other two **FM** screws. Remove the port exhaust **118-4-L** from frame **118-4**.



Apply a little glue to the peg on the inside of the port exhaust **118-4-L**. Fit the exhaust in the slot in the hull section **119-1**, oriented as shown in the photo above.

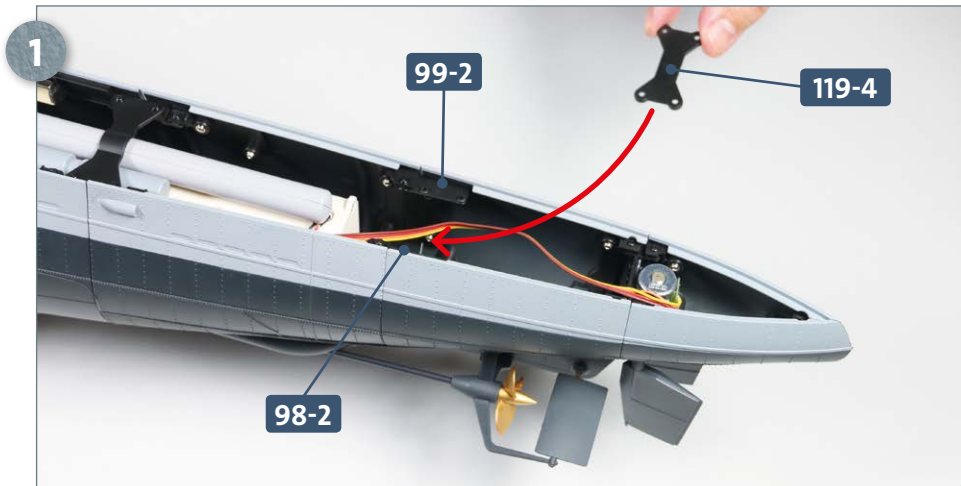


Position the hull section **119-1** next to the main structure, as shown, and have ready three **CP** screws. The three arrows indicate the points (connectors) to which the plate is attached to the hull.

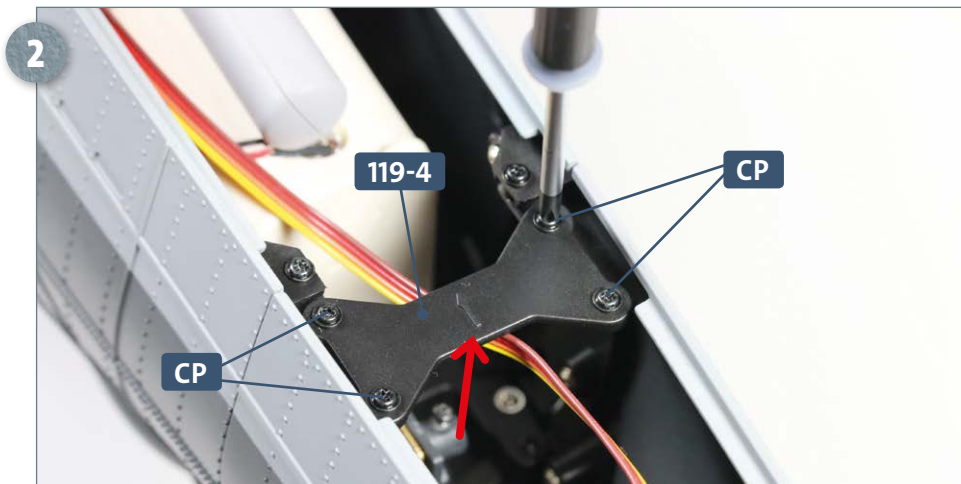


Making sure that no wires have become trapped, fix the hull plate **119-1** in place using three **CP** screws, as pictured.

STAGE 2 → Fitting the crossmember

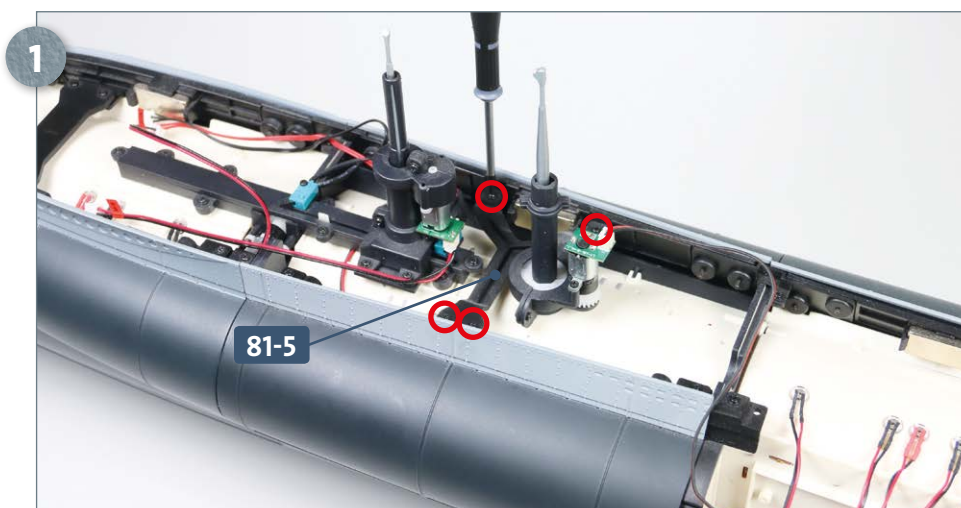


Take the crossmember **119-4** and align its holes over the corresponding holes in connectors **98-2** and **99-2**, as shown.



Make sure that the arrow embossed in the centre of the crossmember **119-4** (indicated by the red arrow) points towards the bow. Fix in place to the aforementioned connectors using two **CP** screws on each side.

STAGE 3 → Swapping out connector 81-8



The final task is to remove the previously installed connector **81-8** and replace it with a slightly different one: this will remove a small gap in the port (L) side of the hull. First, remove the four **CP** screws (locations circled in red) that hold the crossmember **81-5** in place.

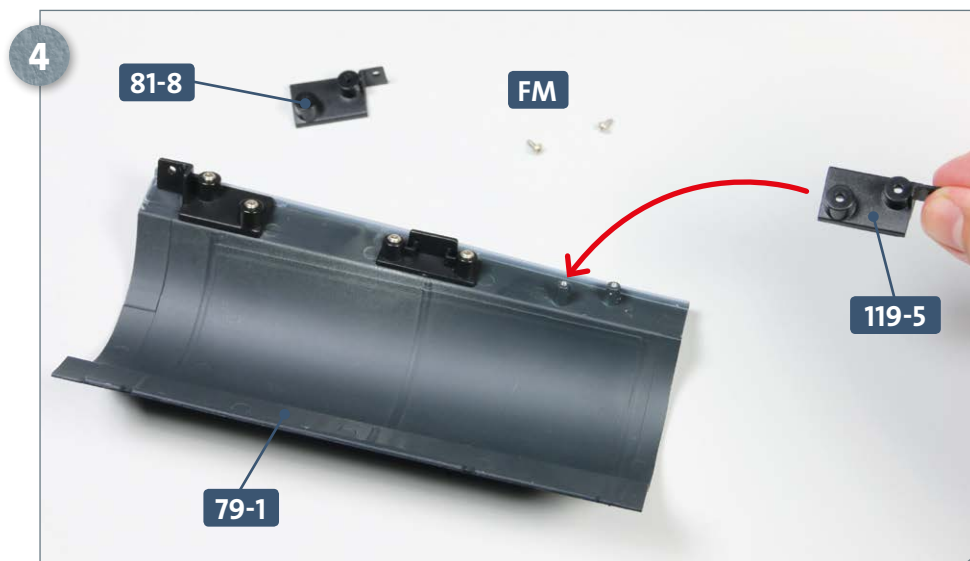
Kit 119: A portside hull section



Place the four **CP** screws safely to one side and remove the crossmember **81-5** as shown. Now, turn to the port (L) hull section **79-1** and remove the two **CP** screws attaching it to the main hull structure (circled in red).



Place the two removed **CP** screws to one side and remove the hull plate **79-1**.

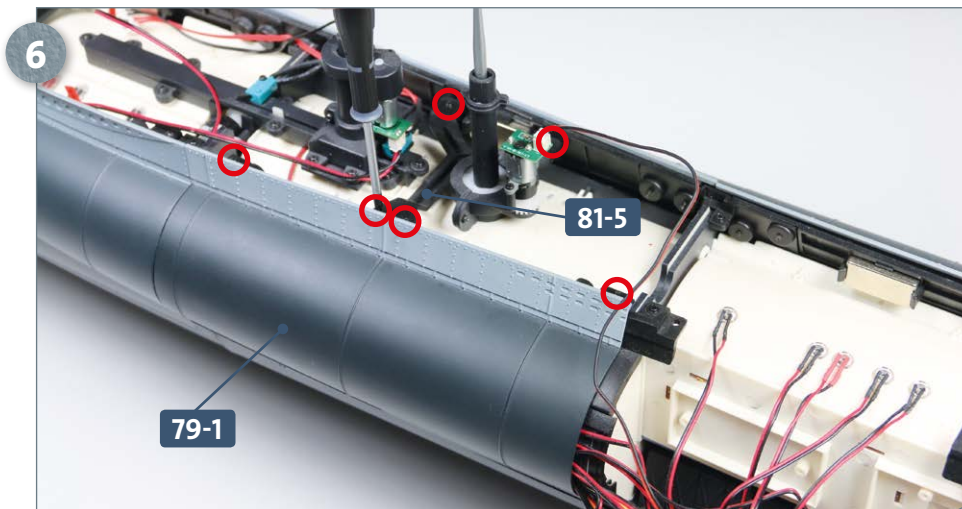


Loosen the two **FM** screws and remove connector **81-8** from hull section **79-1**: this connector can be discarded. In its place, fit connector **119-5**, as shown by the arrow.

Kit 119: A portside hull section

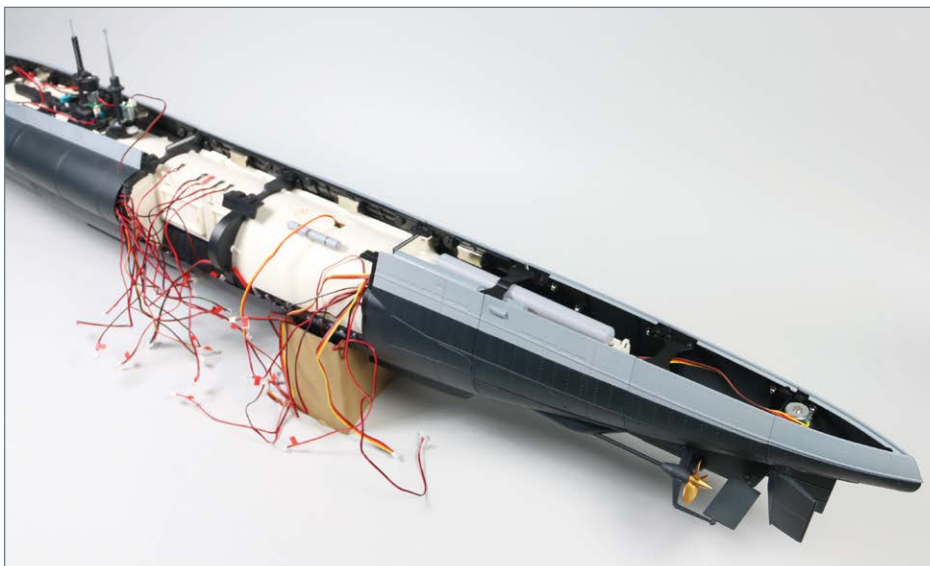


Fix the replacement connector **119-5** in place using two **FM** screws.



Reattach the hull section **79-1** and crossmember **81-5** to the model using the six previously removed **CP** screws: their positions are circled here in red.

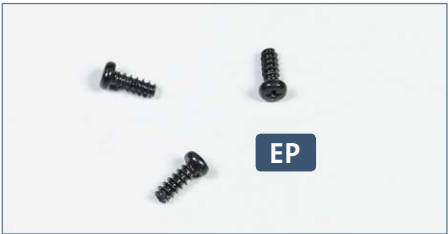
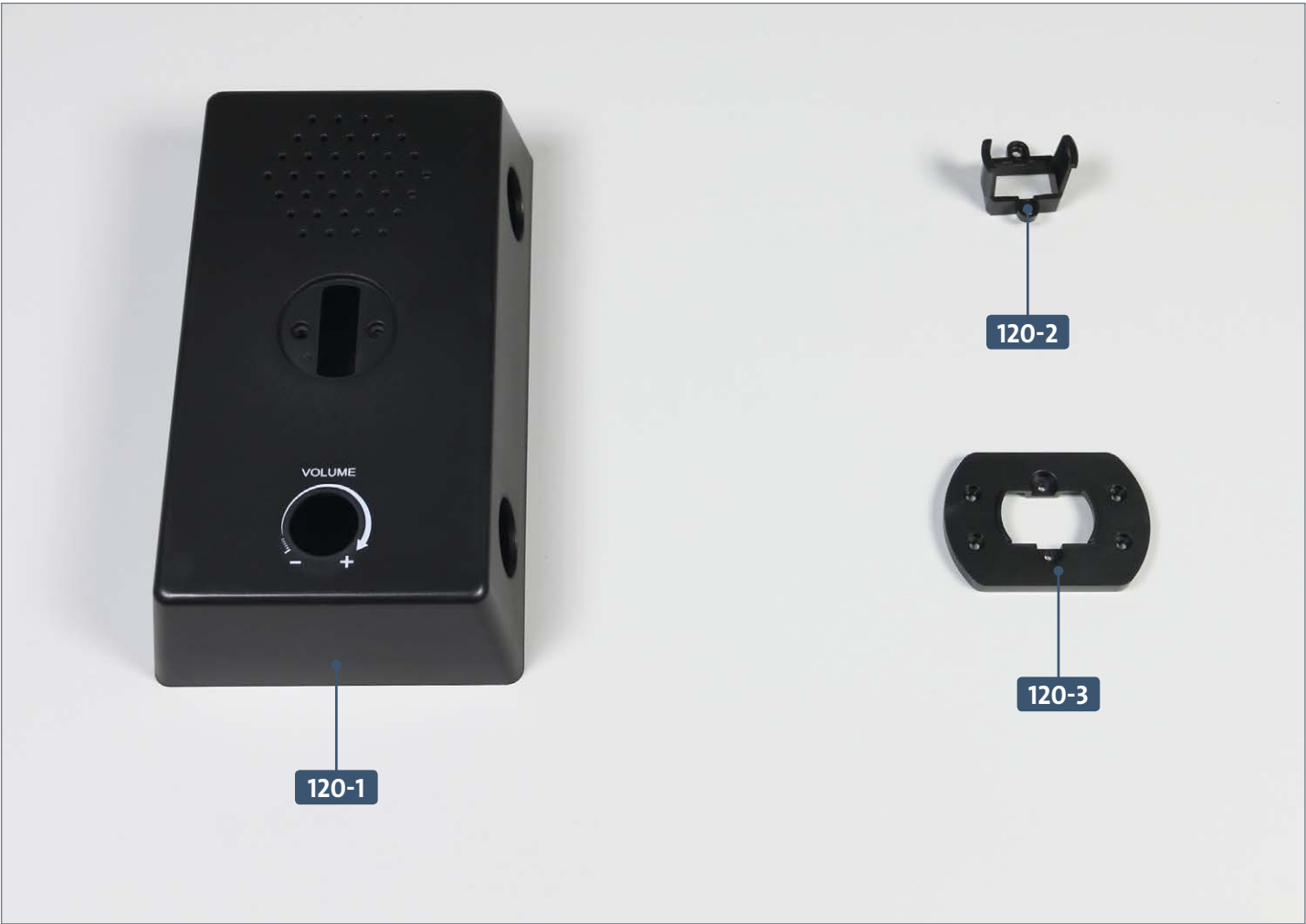
COMPLETED WORK



Another hull section has now been added to the port (L) side of the model. In addition, a crossmember has been fitted and one of the previously fitted connectors has been replaced with a new one.

Kit 120: Model stand (I)

In this kit, we begin assembling the aft stand for your model, attaching a connector to the lower rear bracket.



Parts reference list	
Part no.	Name
120-1	Aft stand
120-2	Connector
120-3	Lower rear bracket

Screws		
Ref	No.	Dimensions
EP	2 + 1	2.3 x 6 mm

STAGE 1 → Attaching the connector

1



Place the lower rear bracket **120-3** and two **EP** screws on your work surface. Take connector **120-2** and fit the two screw tabs at the sides into the recesses of the bracket, as indicated by the arrow.

2



Join the connector **120-2** to the bracket **120-3** using the **EP** screws.

COMPLETED WORK



The connector and bracket have been joined together. (The main part of the aft stand will be added in a subsequent kit.)