

# U 96

---

# U-BOAT

## Pack 27

### Assembly Instructions

**Kit 105: The port propeller shaft**

**Kit 106: The second propeller motor**

**Kit 107: The starboard propeller shaft**

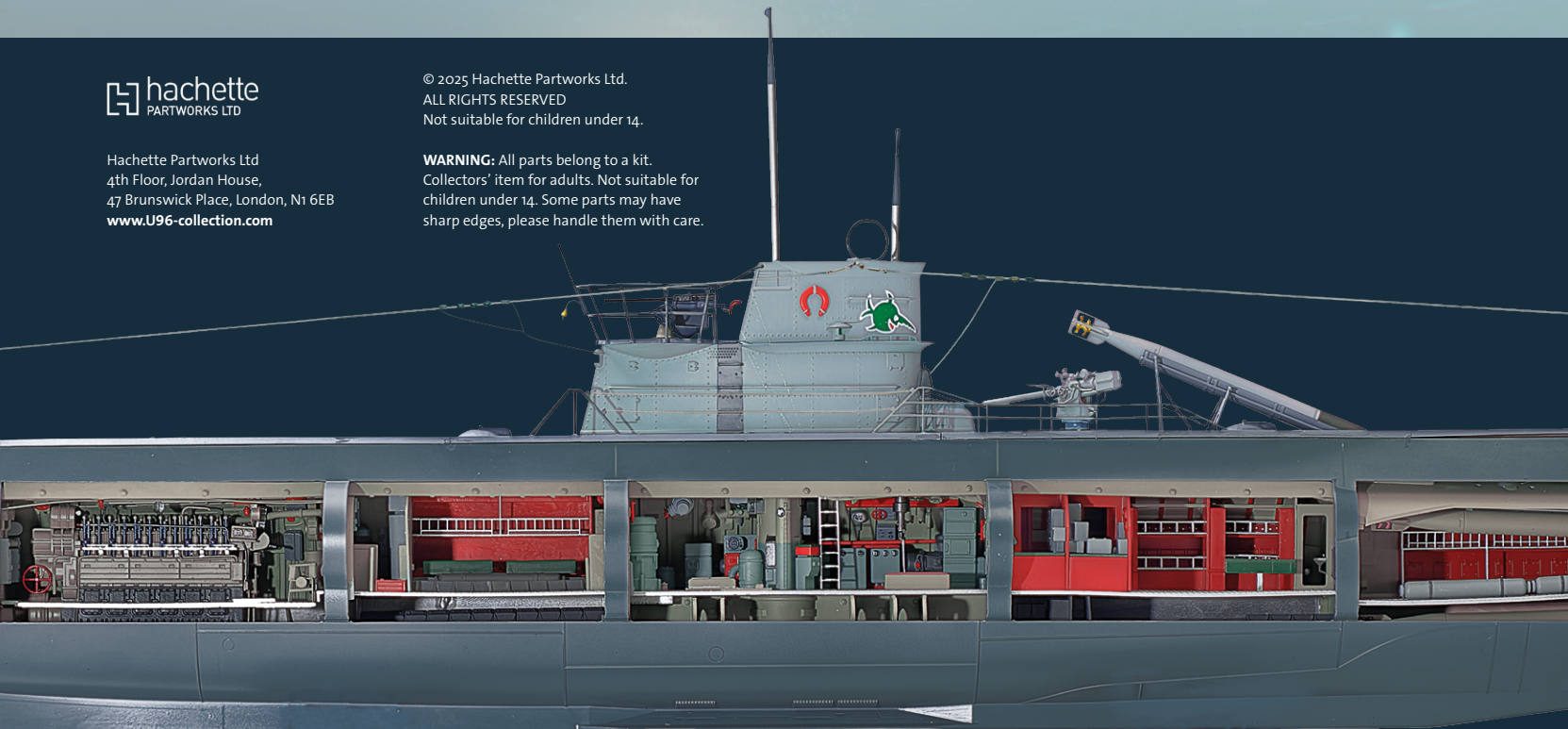
**Kit 108: Elevator motor**



Hachette Partworks Ltd  
4th Floor, Jordan House,  
47 Brunswick Place, London, N1 6EB  
[www.U96-collection.com](http://www.U96-collection.com)

© 2025 Hachette Partworks Ltd.  
ALL RIGHTS RESERVED  
Not suitable for children under 14.

**WARNING:** All parts belong to a kit.  
Collectors' item for adults. Not suitable for  
children under 14. Some parts may have  
sharp edges, please handle them with care.



# Kit 105: The port propeller shaft

In this kit, the propeller blades are firstly glued to the hub of the port (L) side propeller, before the propeller shaft assembly is inserted into the main hull, and the propeller motor is mounted.



Parts reference list	
Part no.	Name
105-1	Port (L) side propeller shaft assembly
105-2	Three propeller blades
105-3	Retaining plate



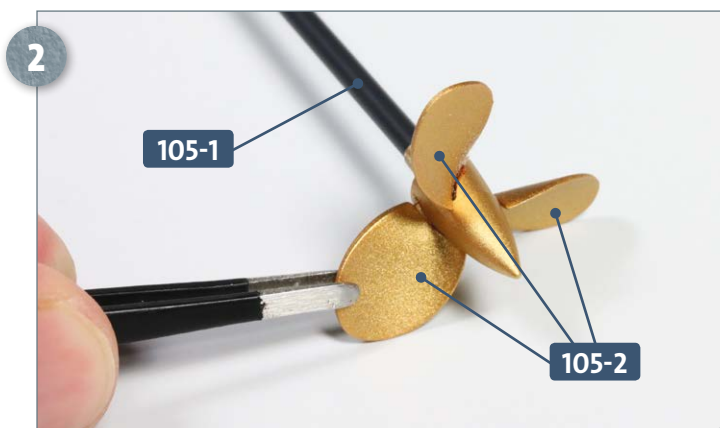
Screws		
Ref	No.	Dimensions
FM	1 + 1	2 x 4 mm (PWM)
GM	2 + 1	1.4 x 6 mm (PWM)
CP	2 + 1	2 x 4 mm (PWB)

## Kit 105: The port propeller shaft

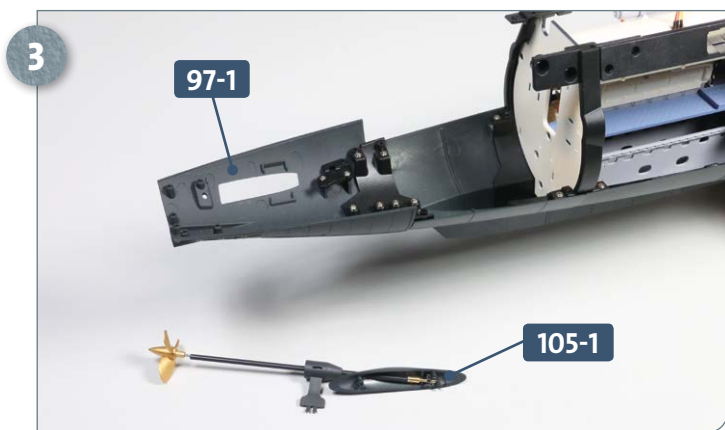
### STAGE 1 → Installation of port (L) side propeller and motor



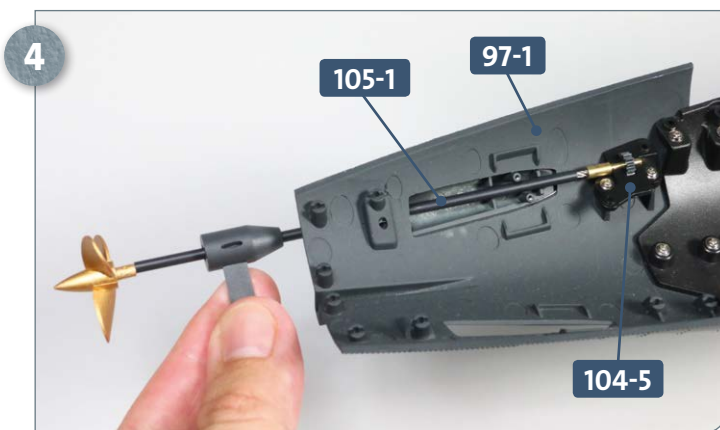
Place the port (L) side propeller assembly **105-1** on your work surface. Detach the three propeller blades **105-2** from their frame and gently smooth any rough edges.



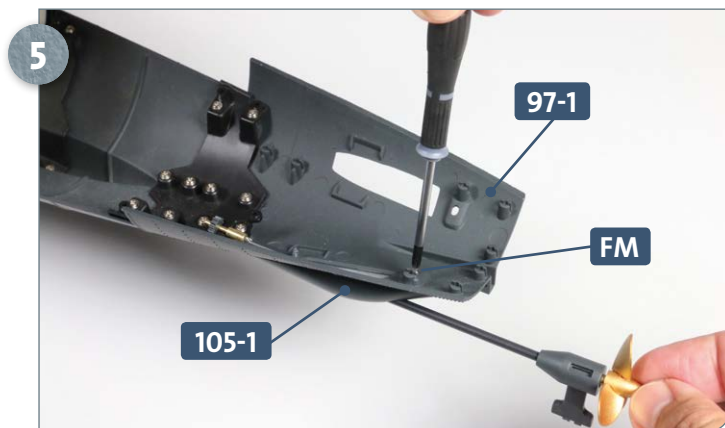
Glue the three propeller blades **105-2** into the slots of the propeller hub **105-1** using a little glue, as shown. Take time whilst doing this and check the alignment of the blades by looking at the propeller from the end.



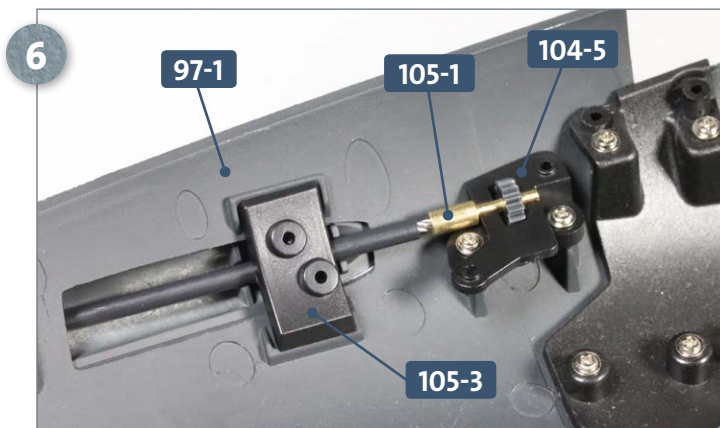
Place the main hull assembly on your work surface so that you have access to the aft end and hull section **97-1**. Have ready the propeller shaft assembly **105-1**.



Guide the shaft of the propeller assembly **105-1** through the rectangular opening in the port (L) side of the aft hull section **97-1**. The cog at the forward end of the shaft fits into the recess in the motor housing **104-5**, as shown.



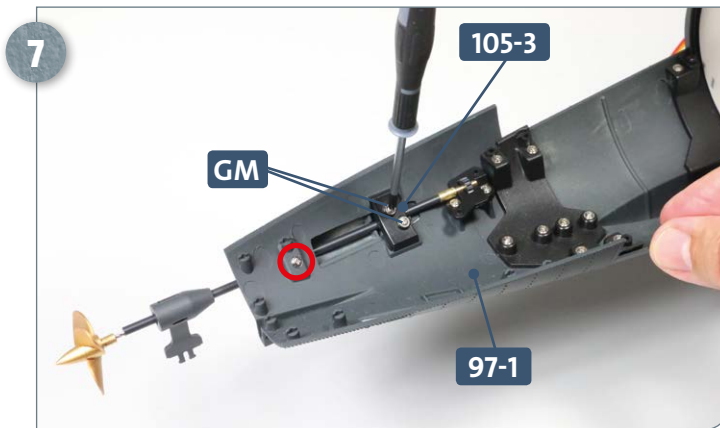
Attach the domed die-cast structure located on the propeller shaft assembly **105-1** to the hull section **97-1** using an **FM** screw. The screw is circled in red in the photo in step 7.



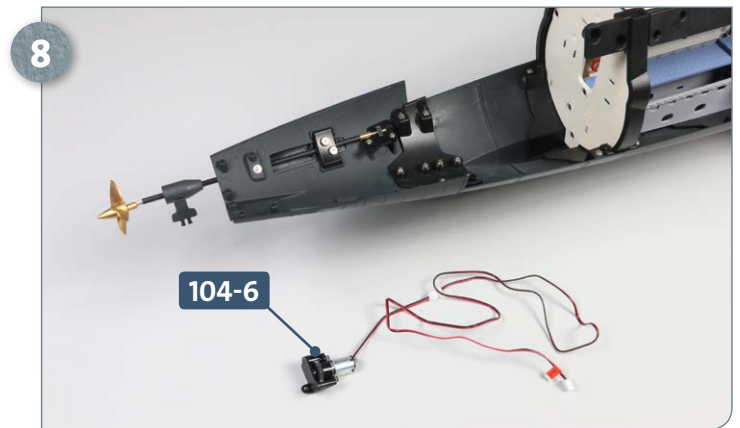
After checking the cog on the shaft **105-1** is seated in the housing **104-5**, fit the retaining plate **105-3** into the recess of the hull section **97-1**: the plate covers the shaft tube of **105-1**, as shown.



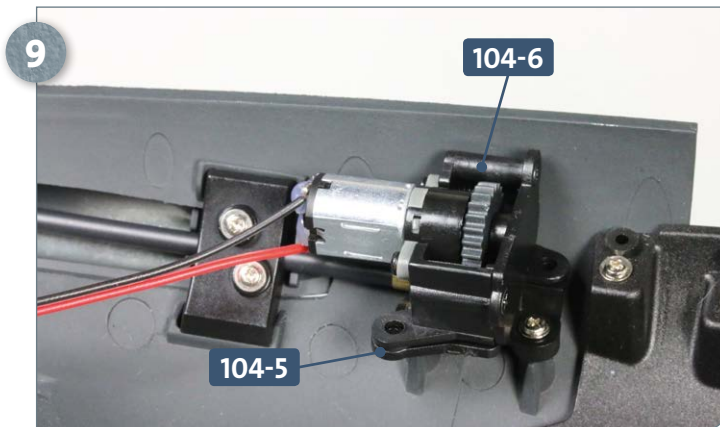
## Kit 105: The port propeller shaft



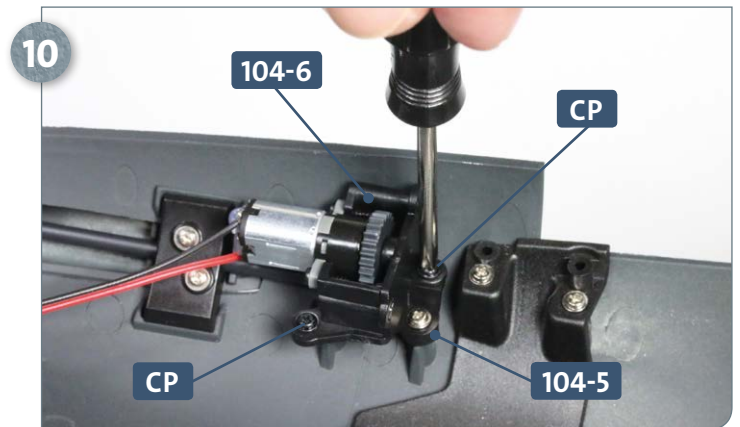
Fasten the retaining plate **105-3** to the hull section **97-1** using two **GM** screws. (The screw you attached in step 5 is circled in red above.)



Place the motor assembly and housing **104-6**, which you assembled in the previous kit, next to the model.



Fit the motor housing **104-6** onto the motor housing that is already attached to the hull, **104-5**, as pictured.



Fasten the two parts of the motor housing **104-6** and **104-5** together using two **CP** screws.

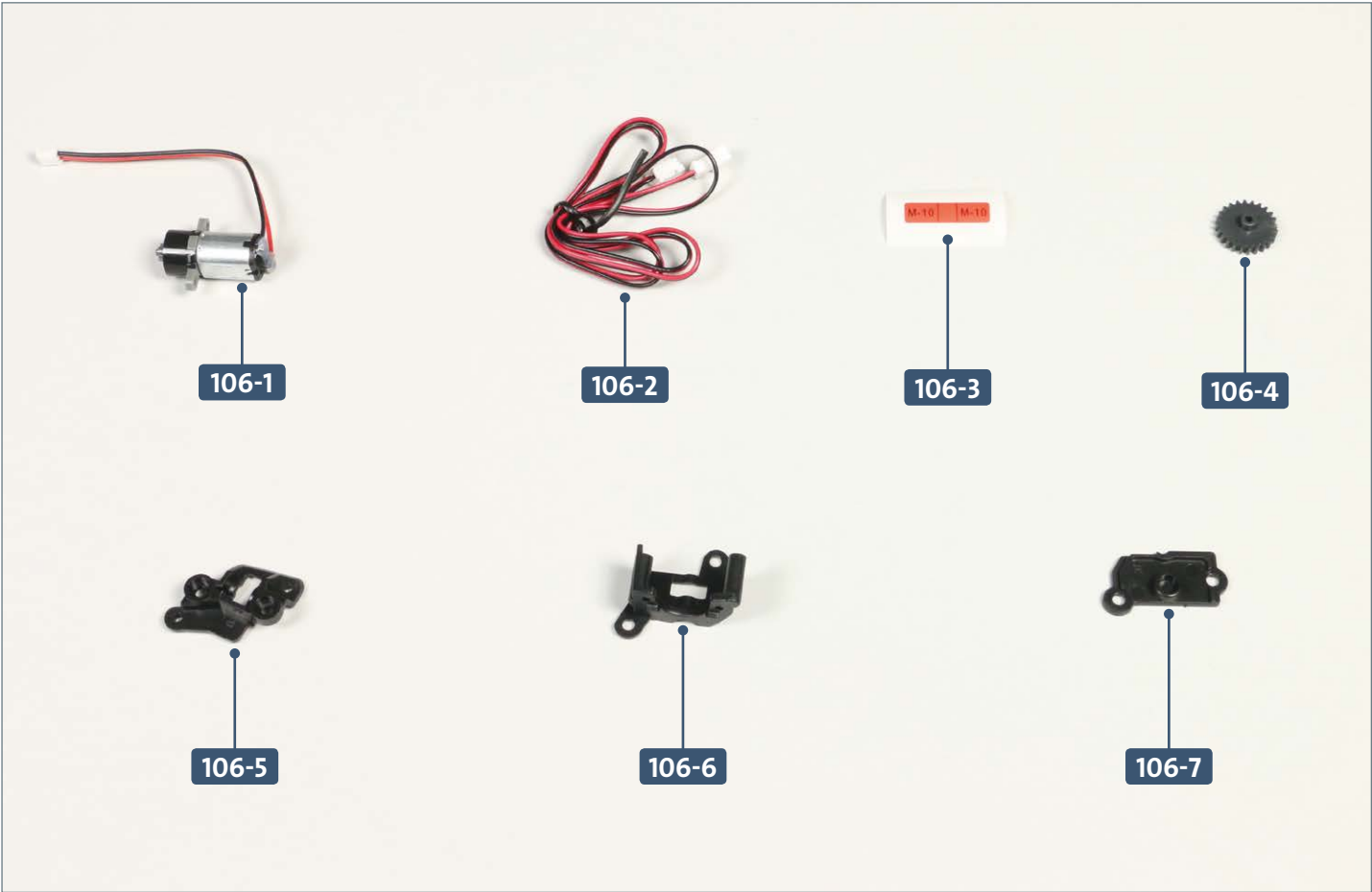
## COMPLETED WORK



The port (L) side propeller shaft assembly has now been prepared and inserted into the main assembly. The motor for the port (L) side propeller has also been mounted in the model.

# Kit 106: The second propeller motor

In this kit, the starboard (R) propeller motor is fitted with a cable attachment complete with cable label. A cog is also fitted to the hub of the motor, which is then screwed to its housing.



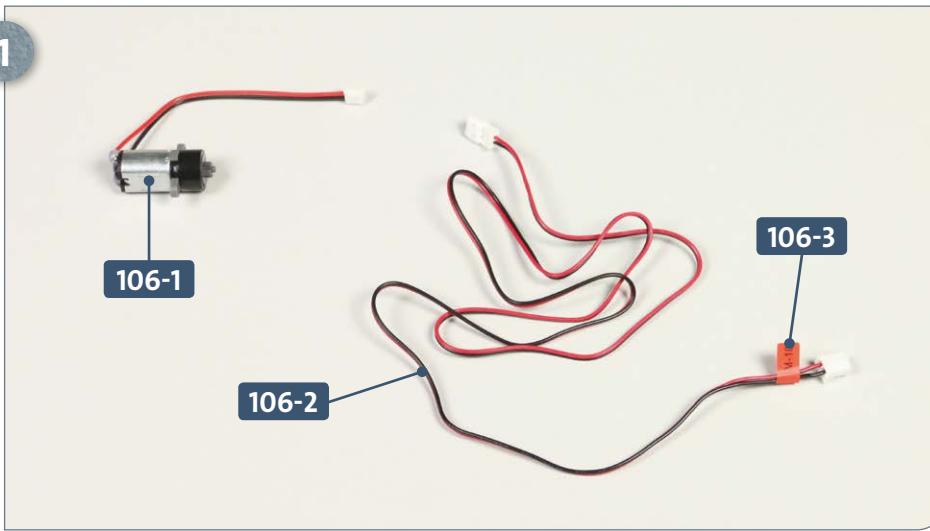
Parts reference list	
Part no.	Name
106-1	Motor
106-2	Cable
106-3	Cable label
106-4	Cog
106-5	Motor housing
106-6	Motor housing
106-7	Motor housing



Screws		
Ref	No.	dimensions
FM	2 + 1	2 x 4 mm (PWM)
BP	2 + 1	1.7 x 6 mm (PB)
FP	2 + 1	2 x 6 mm (KB)

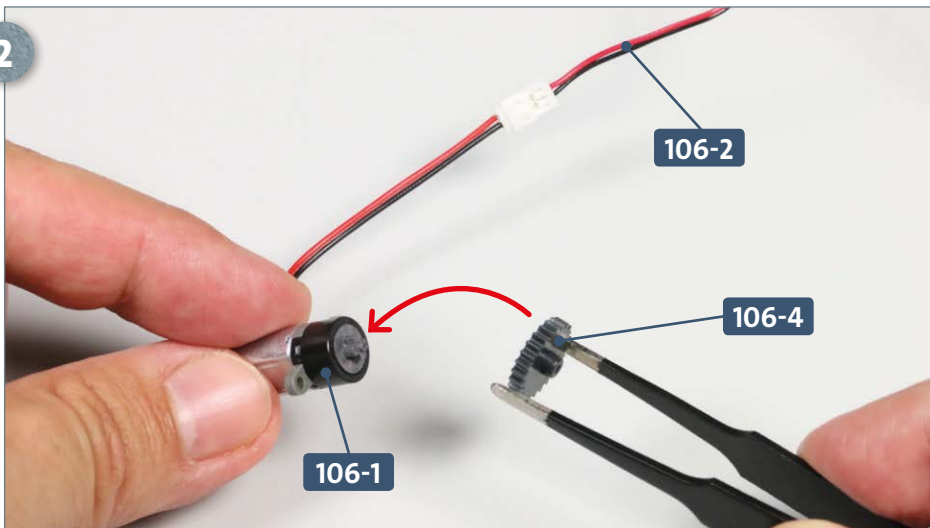
### STAGE 1 → Port (L) side propeller motor

1



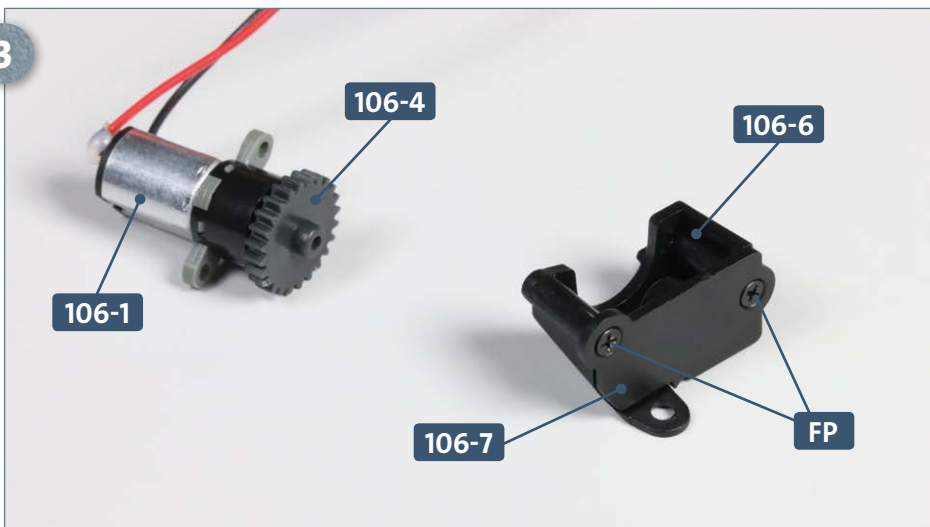
Remove the tie from cable **106-2**. Attach cable label **106-3** (marked **M-10**) to the plug at the end of the cable, as pictured. Have ready motor **106-1**.

2



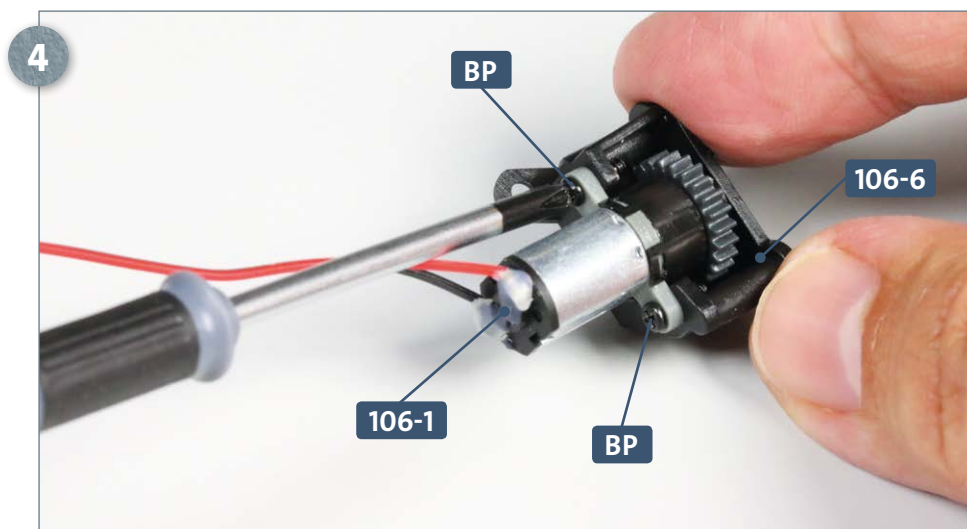
Connect the plug of cable **106-1** to the socket of **106-2**, as pictured. Take the cog **106-4** and fit it onto the hub of the motor, as indicated by the arrow.

3



Fit the two parts of the motor housing **106-6** and **106-7** together and fix in place using two **FP** screws, as shown. Have ready the motor **106-1** and cog **106-4** from the previous step.

## Kit 106: The second propeller motor

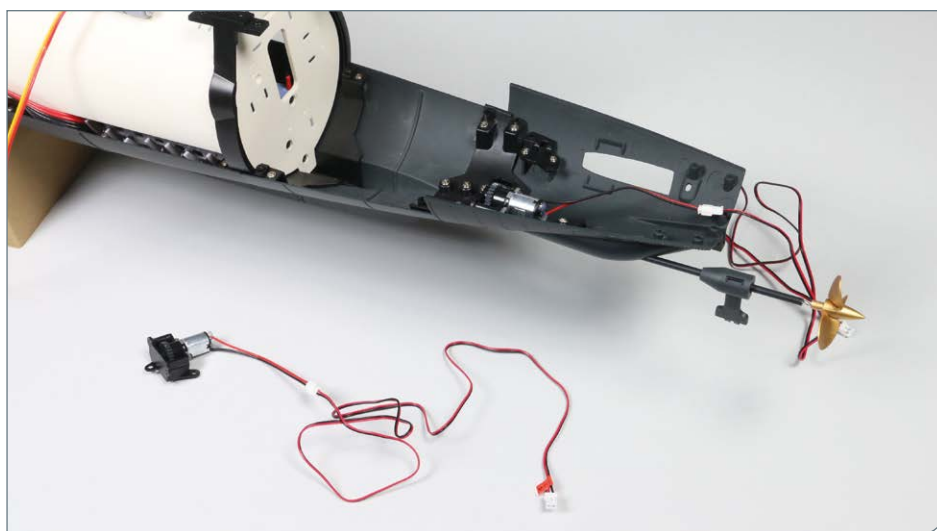


Take the motor **106-1** and fit the attached cog in the recess of the motor housing **106-6**. Fix the motor to the housing using two **BP** screws.



Place the main hull assembly on your work surface so that you have access to the aft end. Position the motor housing **106-5** on the two supports on the starboard (R) side of the lower hull section **97-1**. Attach in position using two **FM** screws.

### COMPLETED WORK

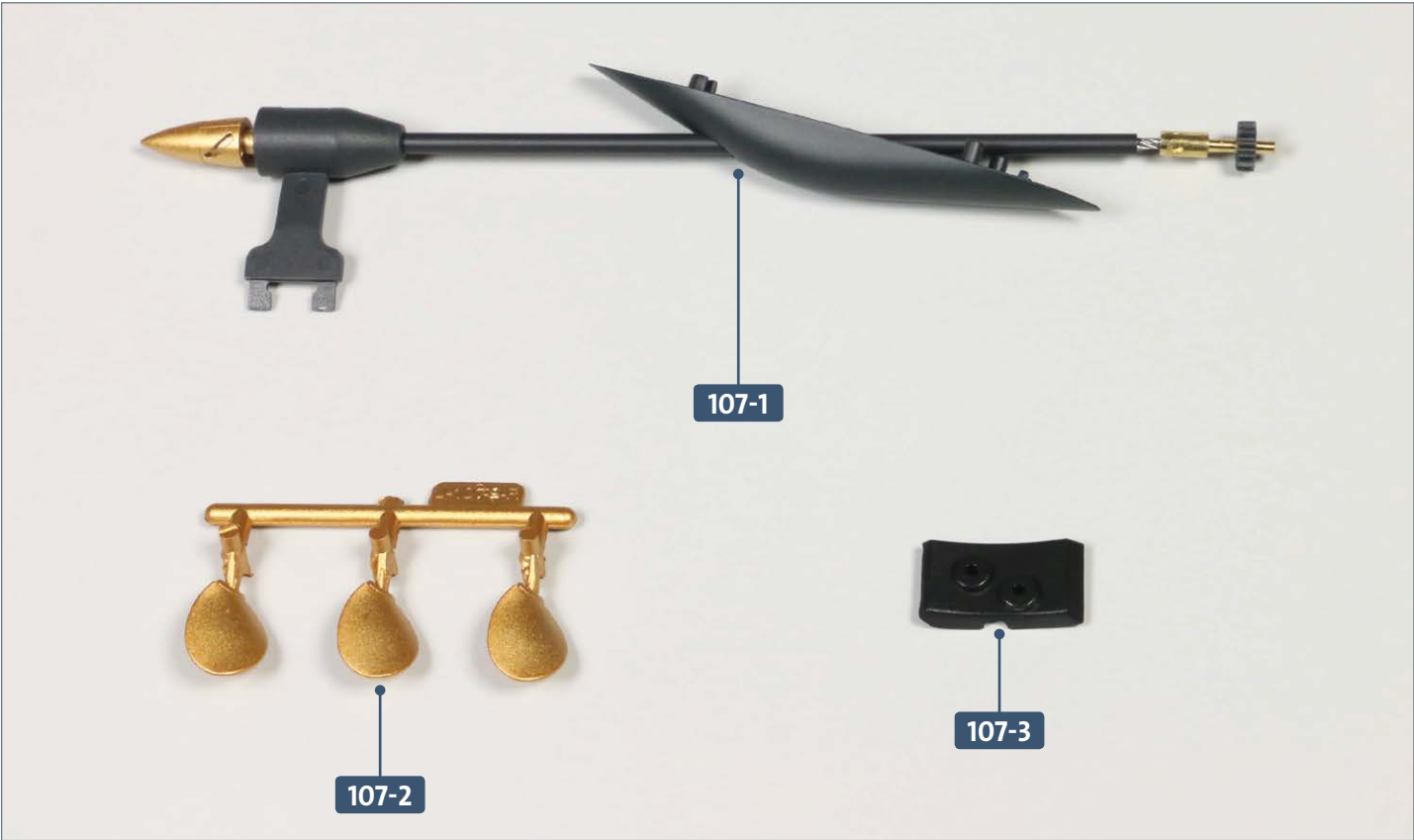


The motor for the starboard (R) propeller is now fitted with a cable and has been inserted into its housing. The motor will be installed in the next stage of the build.



# Kit 107: The starboard propeller shaft

In this kit, blades are glued to the hub of the starboard (R) propeller, the propeller shaft assembly is fitted into the main hull, and the propeller motor is mounted.



Parts reference list	
Part no.	Name
107-1	Starboard (R) side propeller shaft assembly
107-2	Three propeller blades
107-3	Retaining plate



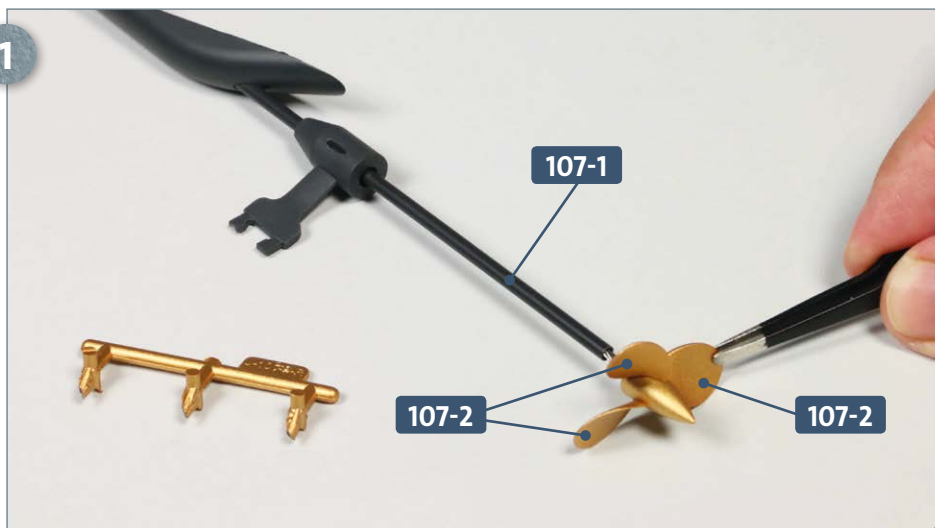
Screws		
Ref	No.	Dimensions
FM	1 + 1	2 x 4 mm (PWM)
GM	2 + 1	1.4 x 6 mm (PWM)
CP	2 + 1	2 x 4 mm (PWB)



## Kit 107: The starboard propeller shaft

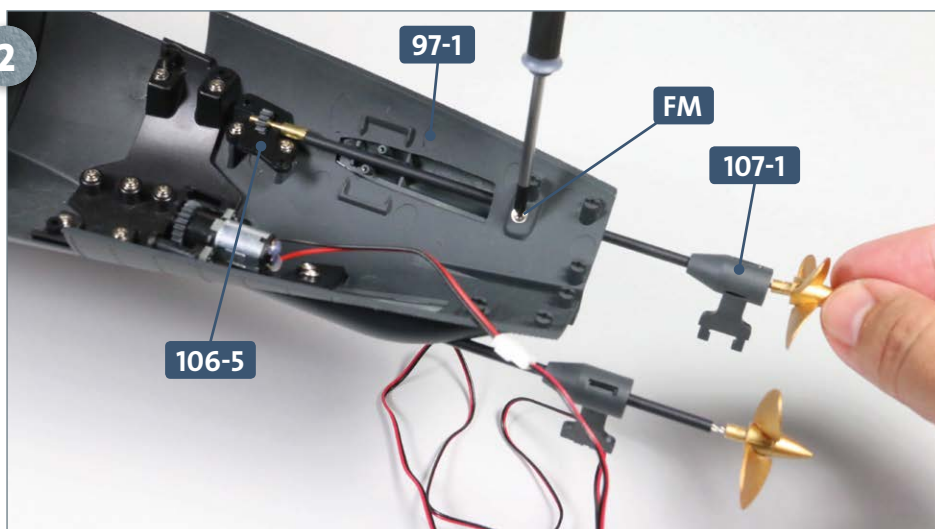
### STAGE 1 → Installation of the starboard (R) side propeller and motor

1



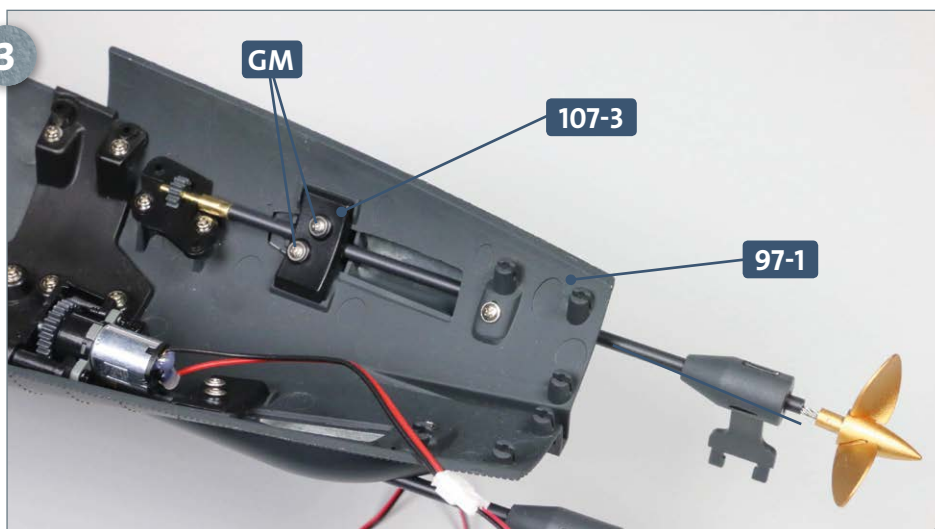
Place the starboard (R) propeller assembly **107-1** on your work surface. Detach the three propeller blades **107-2** from their frame and gently smooth any rough edges. Fix the three blades in place into the slots of the propeller hub **107-1** using a little glue. Take time whilst doing this and check the alignment of the blades by looking at the propeller from the end.

2



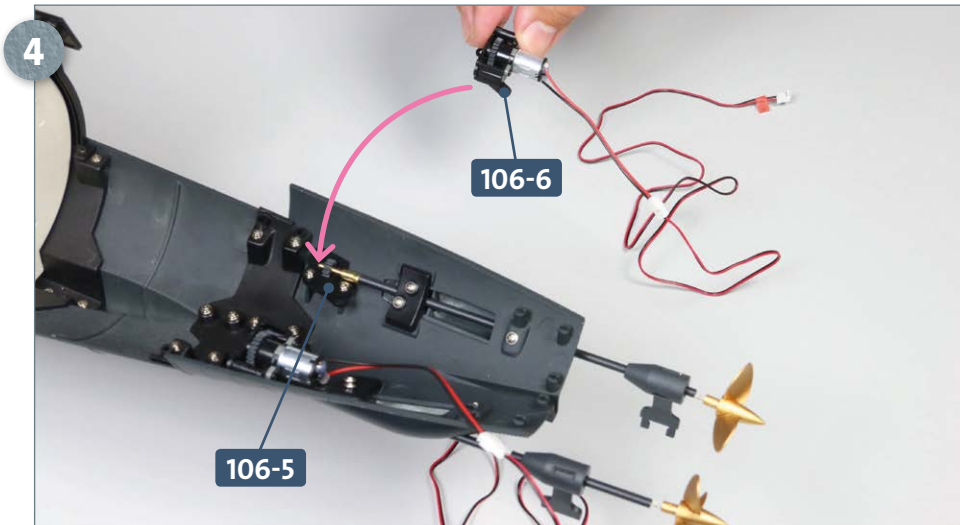
Place the main hull assembly on your work surface so you have access to the aft end. Guide the shaft of the propeller assembly **107-1** through the rectangular opening in the aft hull section **97-1**. The cog at the forward end of the shaft fits into the recess in the motor housing **106-5**, as shown. Attach the domed die-cast structure located on the propeller shaft assembly **107-1** to the hull using an **FM** screw, as shown.

3

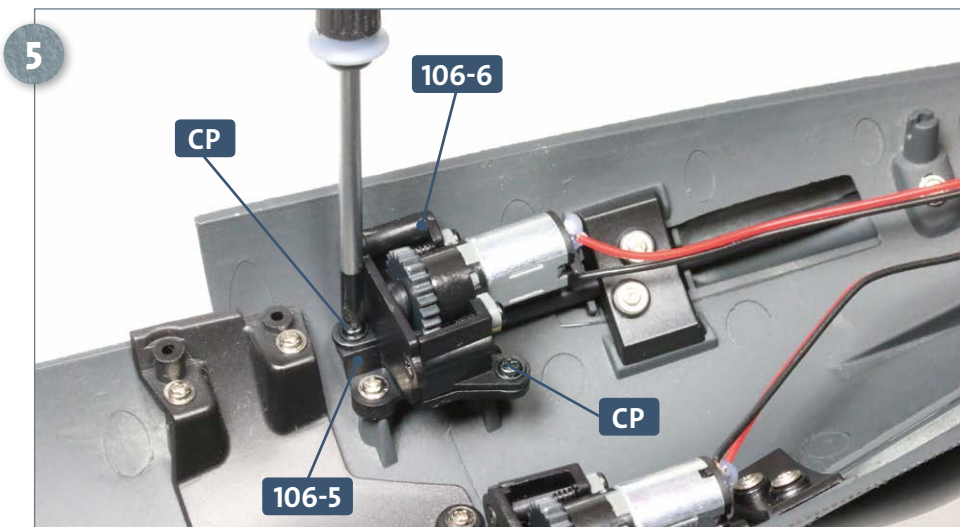


Fit the retaining plate **107-3** into the recess of the hull plate **97-1** so that it covers the shaft. Fasten in place using two **GM** screws.

## Kit 107: The starboard propeller shaft

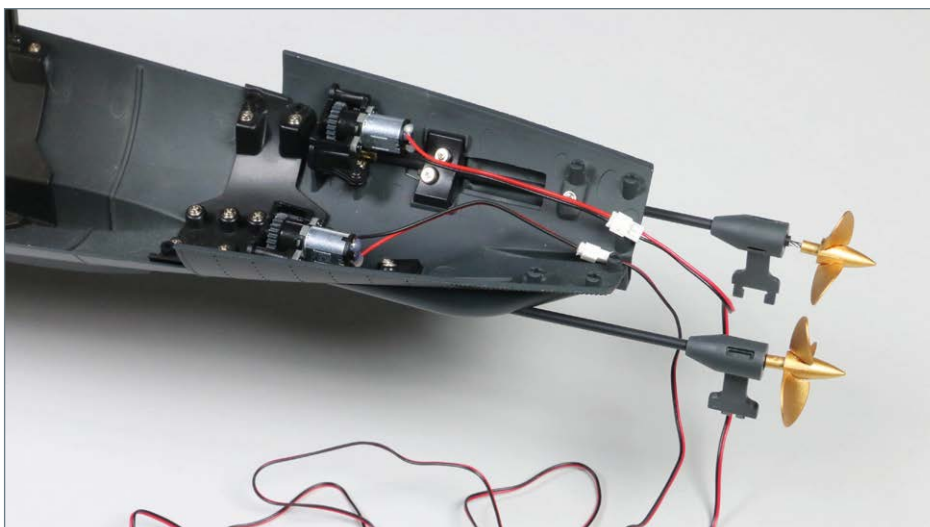


Take the motor assembly in its housing **106-6**, which you assembled in the previous kit, and fit it to the motor housing already attached to the hull structure **106-5**, as shown by the arrow.



Fasten the two parts of the motor housing **106-6** and **106-5** together using two **CP** screws as shown, left.

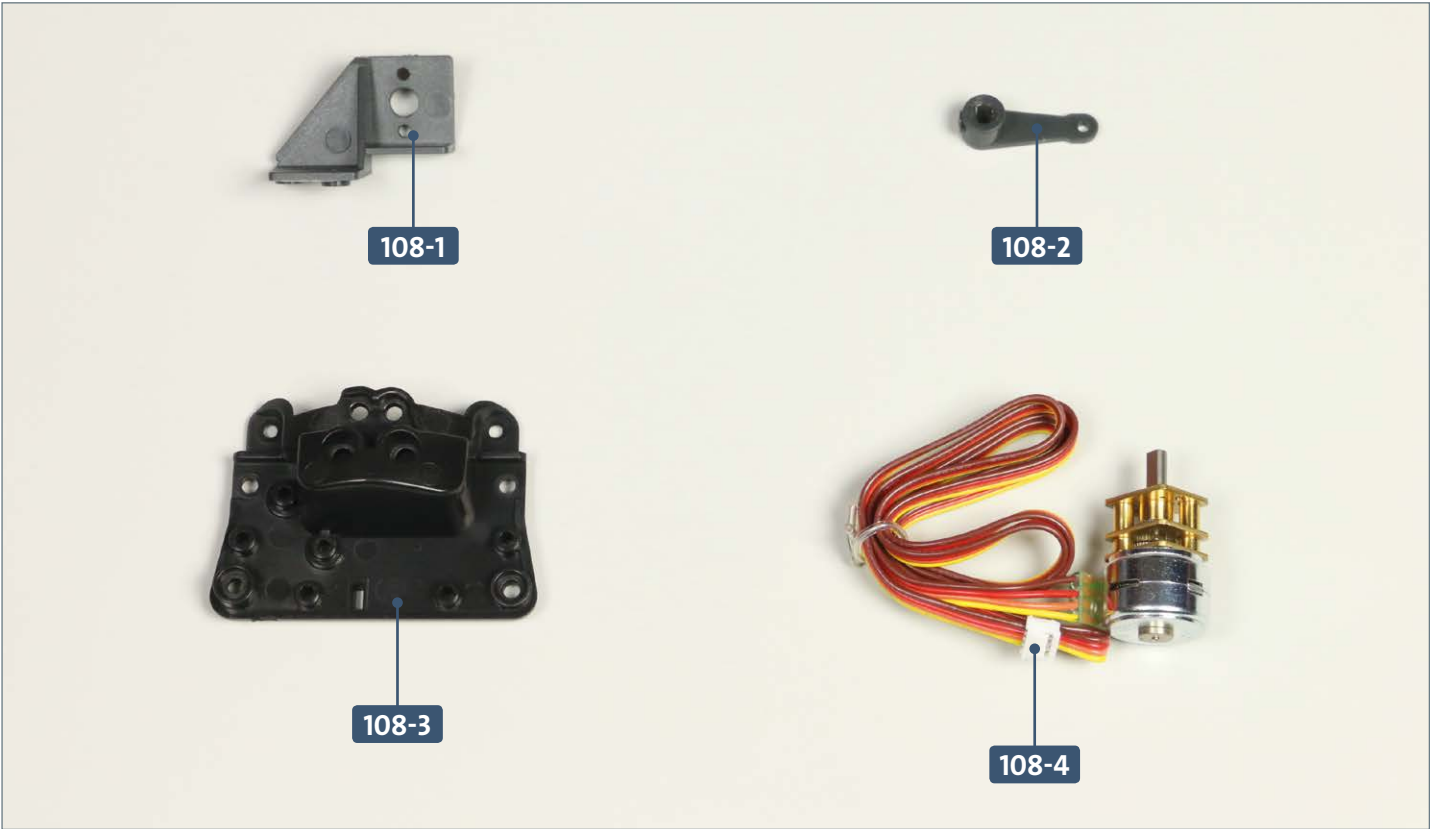
### COMPLETED WORK



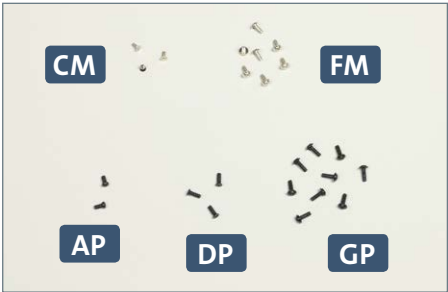
The starboard (R) propeller shaft assembly has now been prepared and inserted into the main hull assembly, and the motor for the starboard (R) propeller has been installed.

# Kit 108: Elevator motor

In this kit, a connector is first fitted to the main hull structure, then the sixth compartment is inserted and fixed in place. The elevator motor is fitted with a mounting plate and a lever.



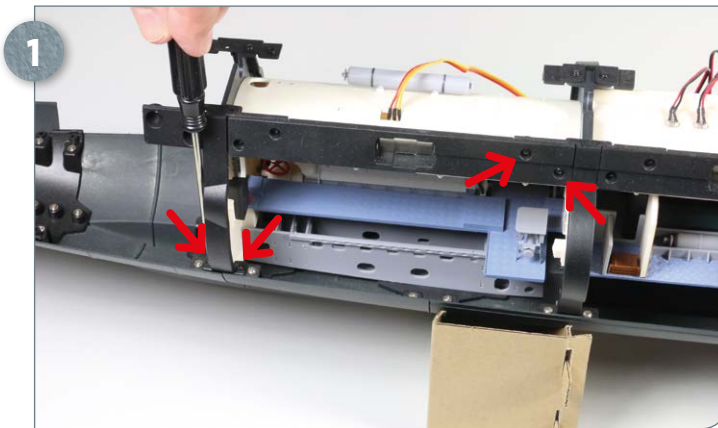
Parts reference list	
Part no.	Name
108-1	Mounting plate
108-2	Lever
108-3	Connector
108-4	Aft elevator motor



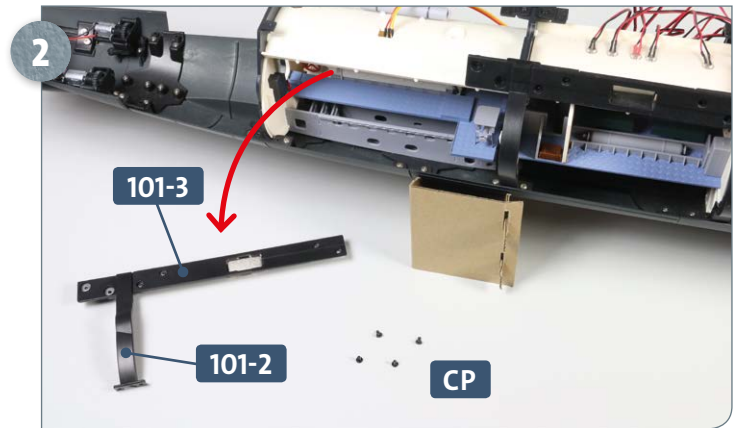
Screws		
Ref	No.	Dimensions
CM	2 + 1	1.6 x 4 mm
FM	6 + 1	2 x 4 mm
AP	1 + 1	2 x 4 mm
DP	2 + 1	2 x 6 mm (PB)
GP	8 + 1	2 x 6 mm (PWB)



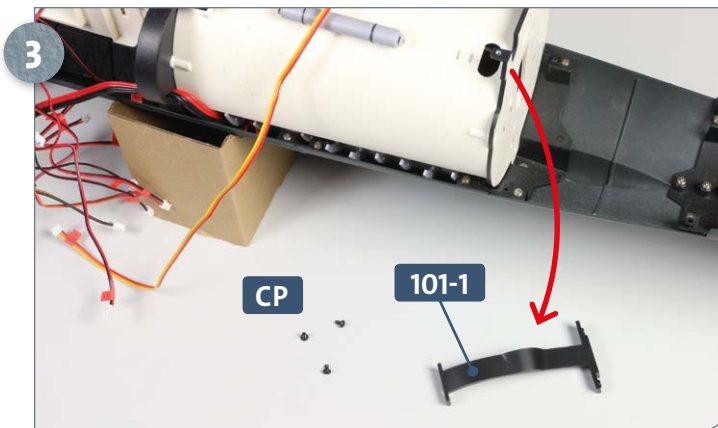
## STAGE 1 → Installing the sixth compartment



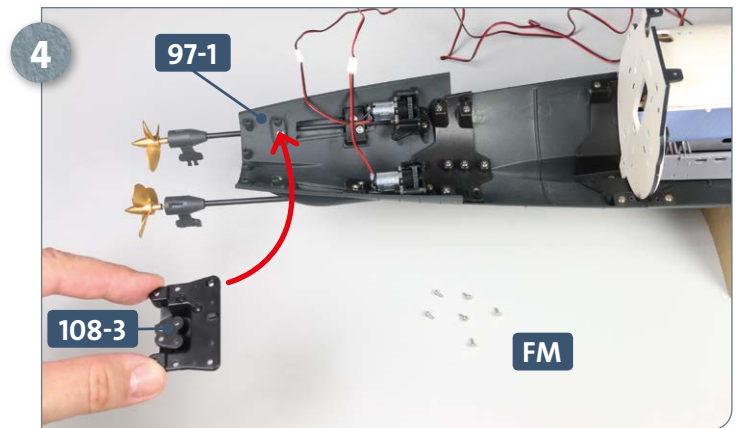
Before starting assembly, first read all the steps in stage 1 carefully. When ready, locate the fifth compartment of the model and remove the four **CP** screws, indicated by the four arrows.



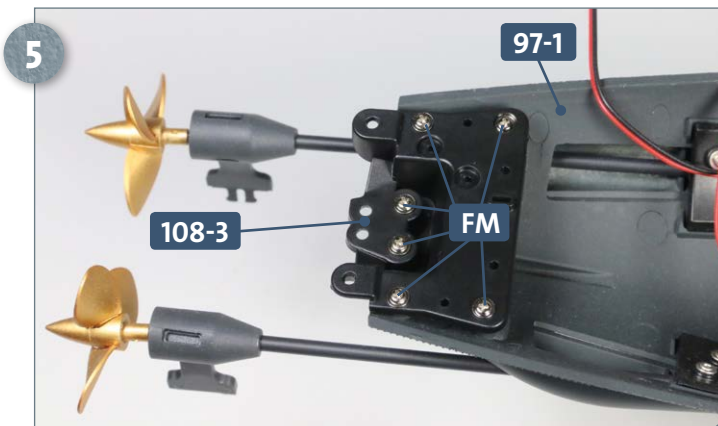
Remove the **101-2/101-3** assembly from the main hull structure. This assembly and the four **CP** screws will be reattached to the model in step 13. Keep the screws safely aside until needed.



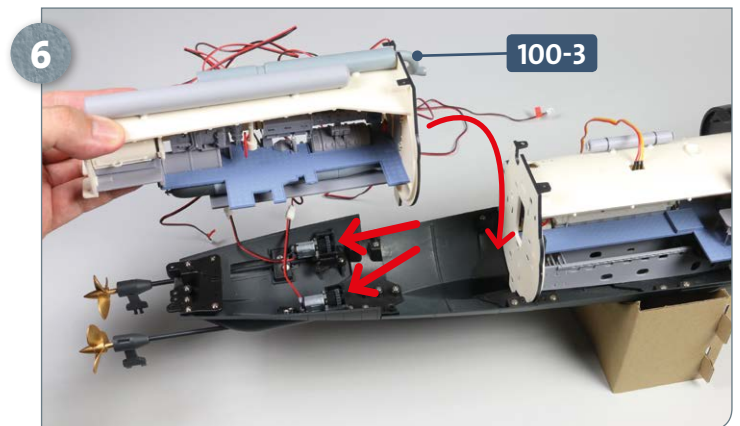
Now, working on the port (L) side of the model, loosen three more **CP** screws and remove connector **101-1** from the hull structure. These will be reattached in step 11.



Have ready six **FM** screws. Take connector **108-3** and place it aft of the lower hull section **97-1**, as shown by the arrow.



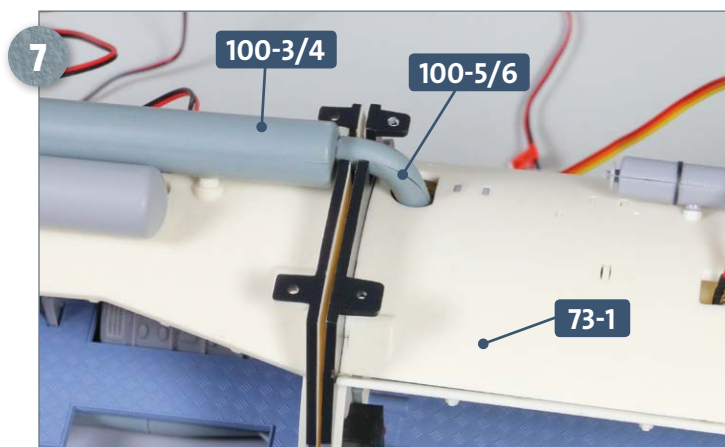
Attach the connector **108-3** to the aft hull section **97-1** with six **FM** screws, as pictured. In the next step, the electric motor room is inserted into the main structure.



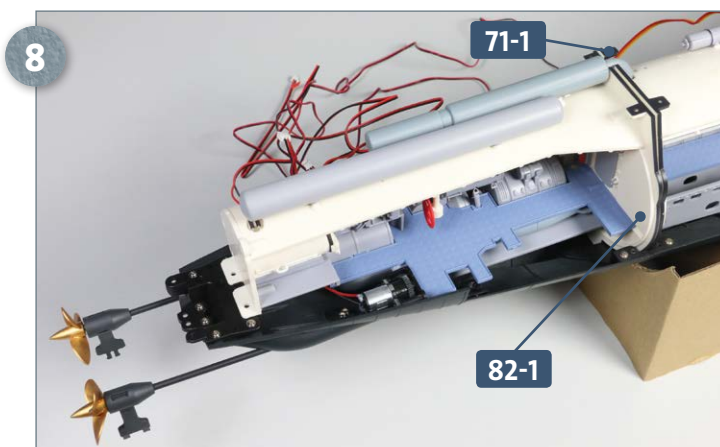
Although the photo shows the muffer **100-3** in place, it is best to temporarily remove it while inserting the electric motor room. Carefully guide the substructure of the compartment past the housings of the two propeller motors, shown by the two arrows. It may help to temporarily loosen the starboard (R) motor.



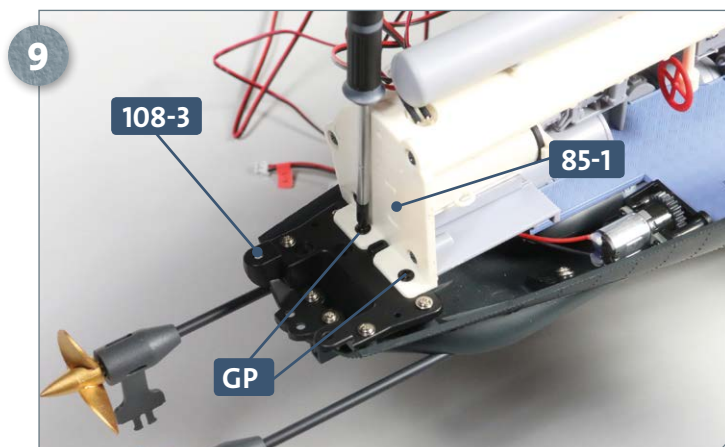
## Kit 108: Elevator motor



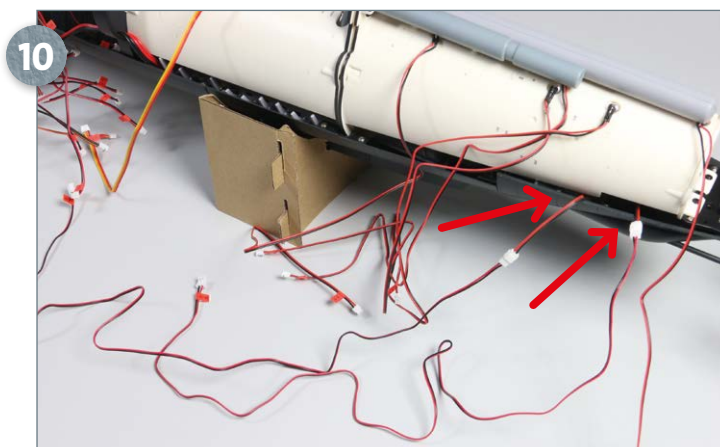
Once the electric motor room is correctly in place, feed the exhaust pipe **100-5/6** through the opening in the deckhead of the diesel engine room **73-1**. When fitted, replace the muffler **100-3/4** on the deckhead of the electric motor room. Only glue the muffler in place once you are certain the motor room is correctly seated.



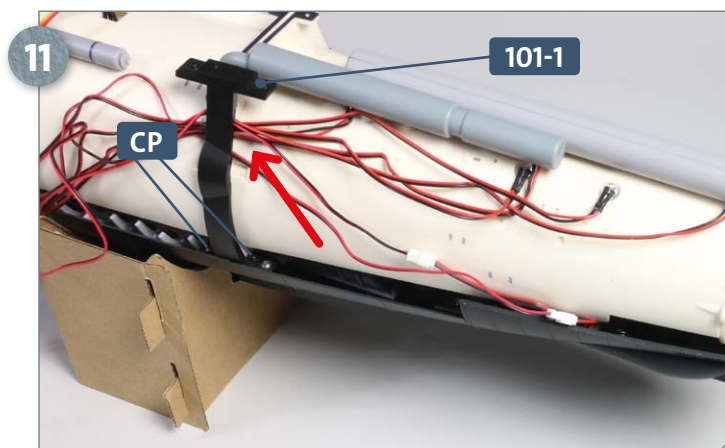
This photograph shows the electric motor room assembly correctly positioned in the main structure: the forward bulkhead **82-1** sits flush against the aft bulkhead of the diesel engine room **71-1**.



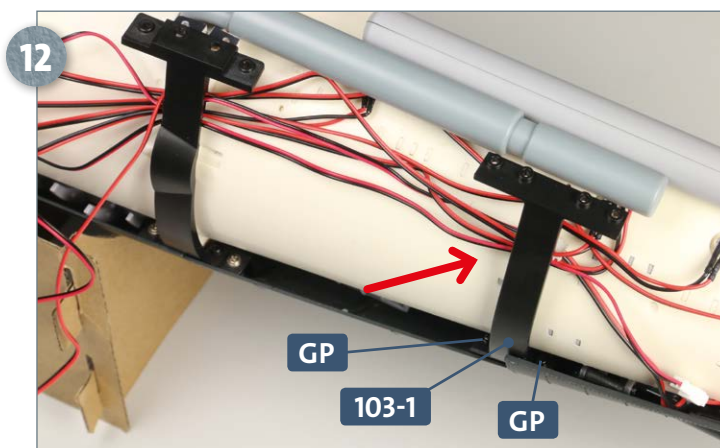
Once the electric motor room assembly is properly seated within the main structure, it needs to be secured. Start with the aft deck panel **85-1**, which is fixed to connector **108-3** with two **GP** screws.



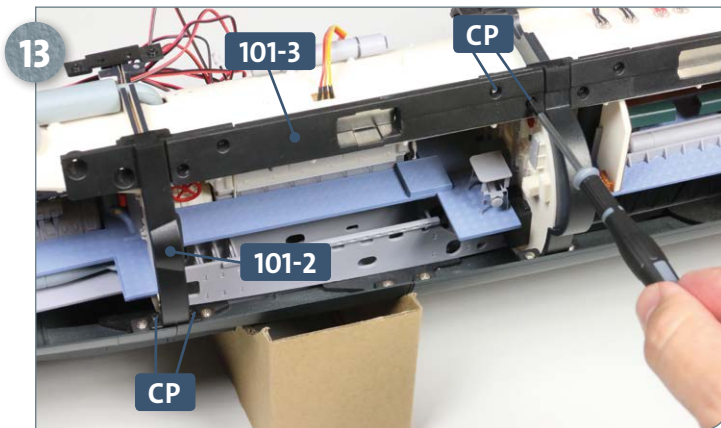
Switching to the port (L) side: make sure that the cables of the two propeller motors (see arrows) are routed sideways beneath the inserted sixth compartment.



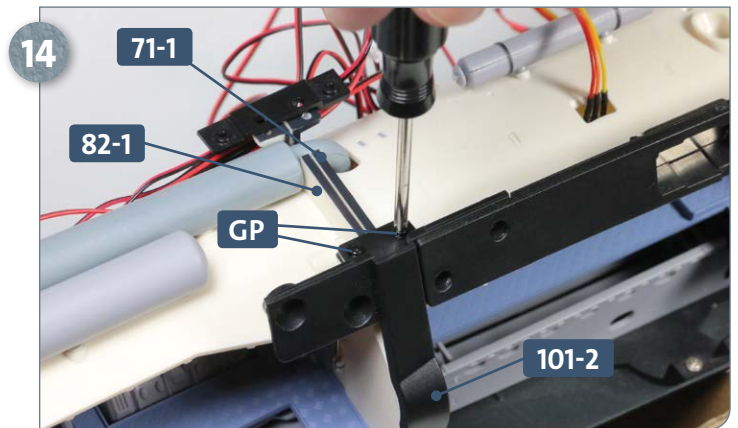
Route all the cables of the sixth compartment forwards. They run beneath the connector **101-1**, which is fixed in place with two of the existing **CP** screws. As there are cables still to be fitted, the top of the connector **101-1** will be secured in a later kit.



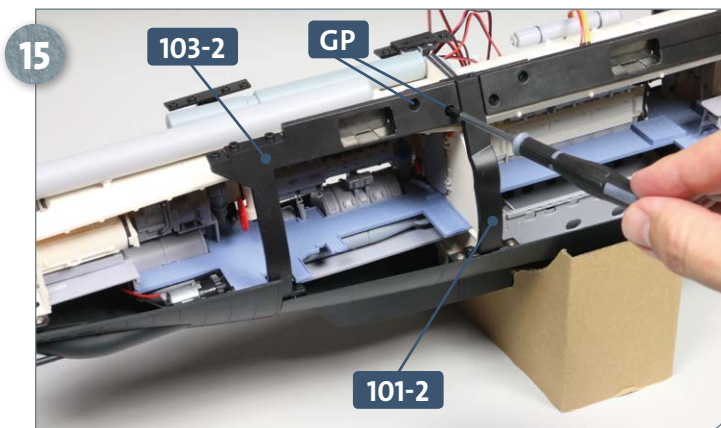
Take the connector **103-1** from kit 103 and insert it into the main hull structure in the centre of the sixth compartment, aft. Fix it to its corresponding bracket using two **GP** screws.



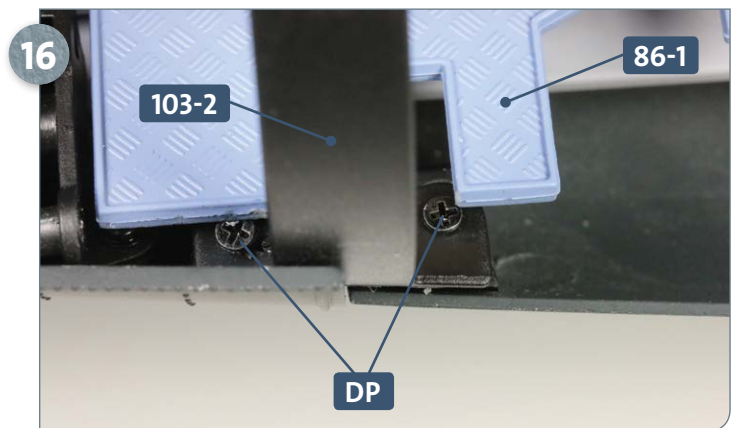
Working on the starboard (R) side: reposition assembly **101-2/101-3** on the main hull structure and secure in place using the four existing **CP** screws, as pictured.



Attach the connector **101-2** at the top of the two bulkheads **71-1** and **82-1** using two **GP** screws.

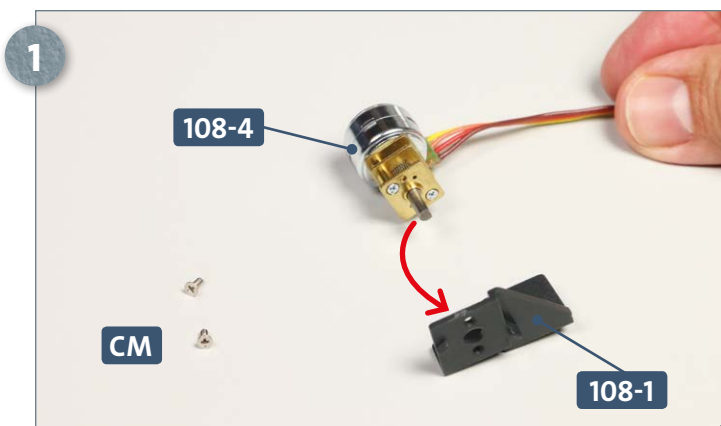


Insert connector **103-2**, which was fitted with a magnet in kit 103, into the hull structure in the centre of the sixth compartment. Fasten it to connector **101-2** using two **GP** screws.

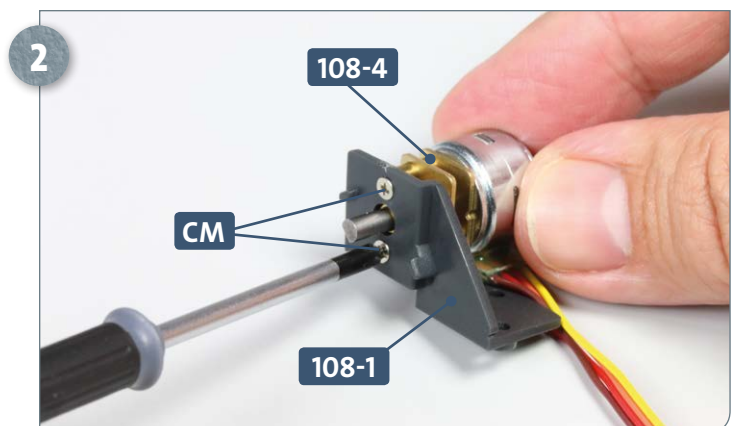


Fix connector **103-2** to its corresponding bracket at the bottom of the hull structure using two **DP** screws. Carefully push the base **86-1** slightly to the side to gain access to the screws.

## STAGE 2 → Aft elevator motor



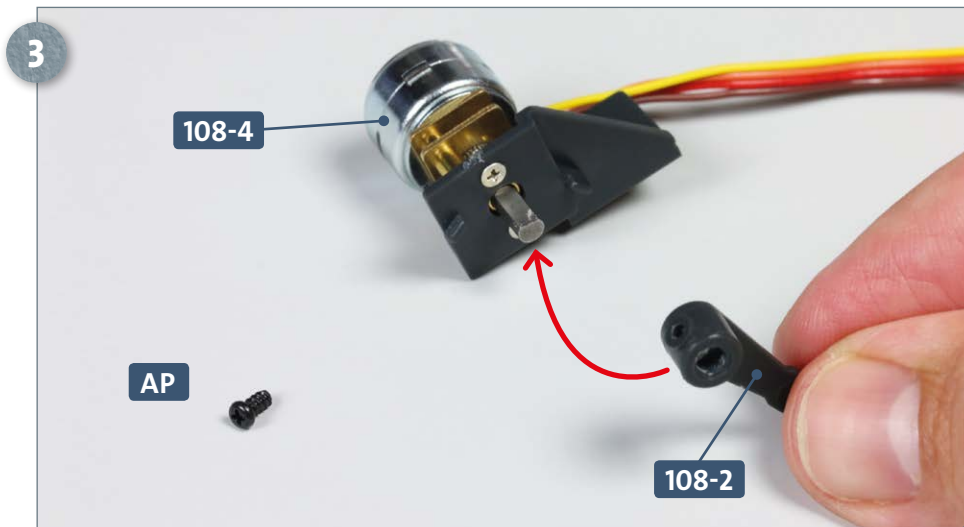
Place the mounting plate **108-1** and two **CM** screws on your work surface. Take the motor **108-4** and guide its hub through the large hole in the mounting plate, as indicated by the arrow.



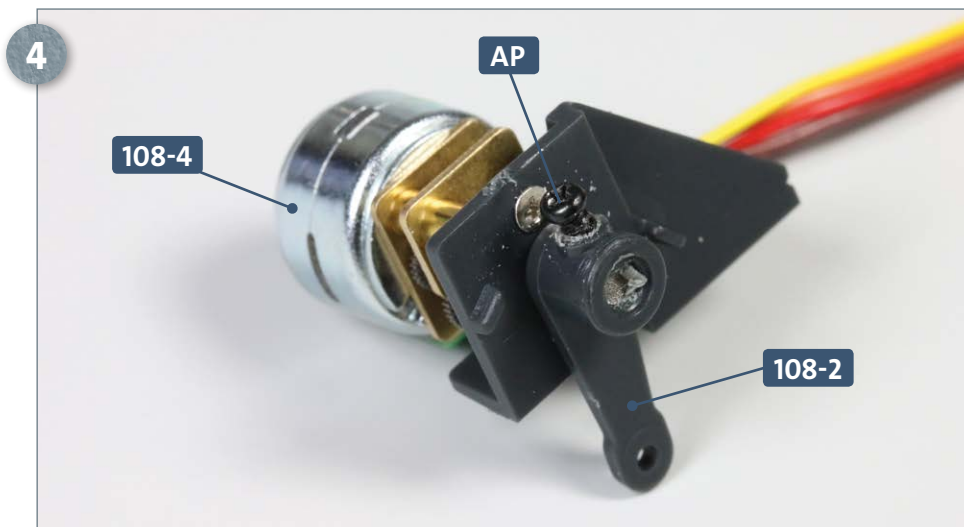
Attach the motor **108-4** to the mounting plate **108-1** using two **CM** screws. Make sure that the plate is correctly aligned.



## Kit 108: Elevator motor

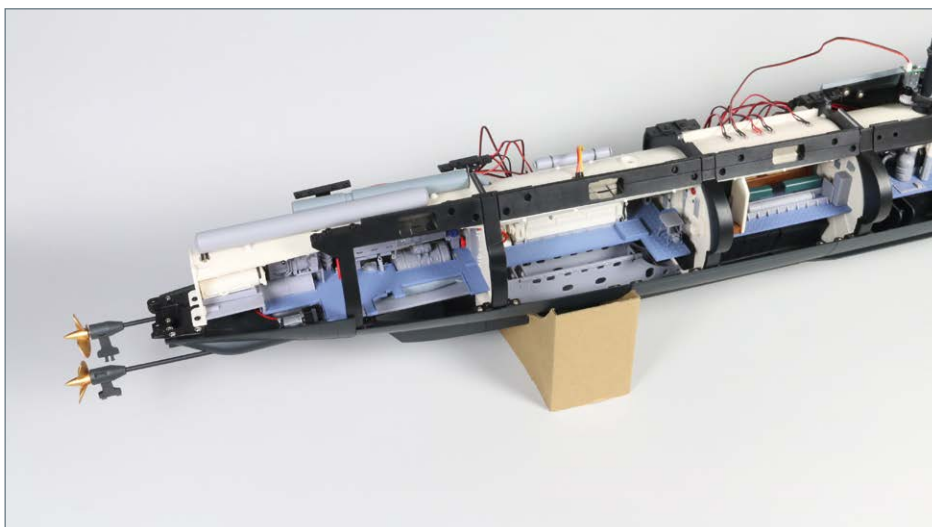


Have ready an **AP** screw. Take the lever **108-2**, orient it as shown in the photo, and fit it onto the hub of the motor. Note that both the hub and the hole in the lever have one flat side.



Taking care not to over-tighten, secure the lever **108-2** to the hub of the motor **108-4** using the **AP** screw. Keep the assembly somewhere safe, as it will be attached to the main structure in the next stage of the build.

## COMPLETED WORK



The sixth compartment (the electric motor room) has now been installed within the main U-Boat structure.