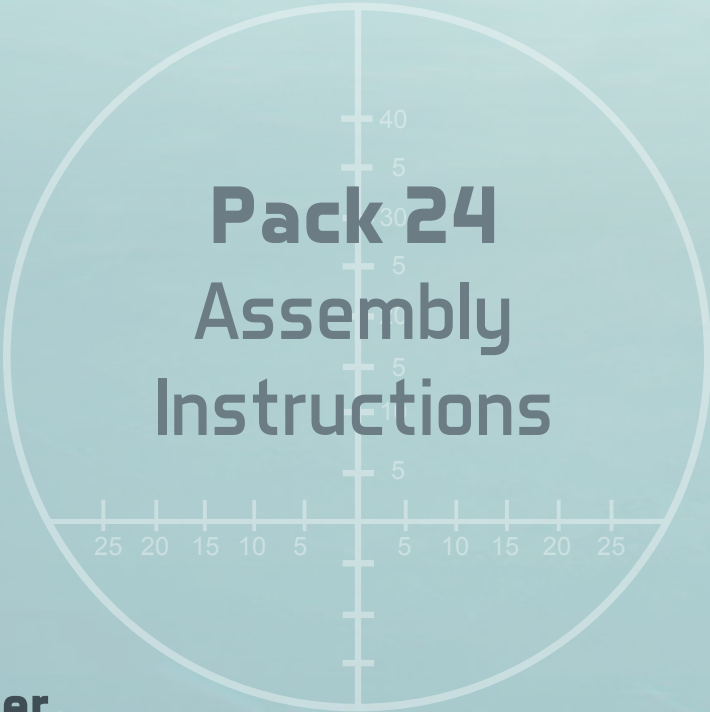


U 96

U-BOAT



Pack 24 Assembly Instructions

Kit 93: Lower port half of tower

Kit 94: Lower starboard half of tower

Kit 95: Bearing frame for radio

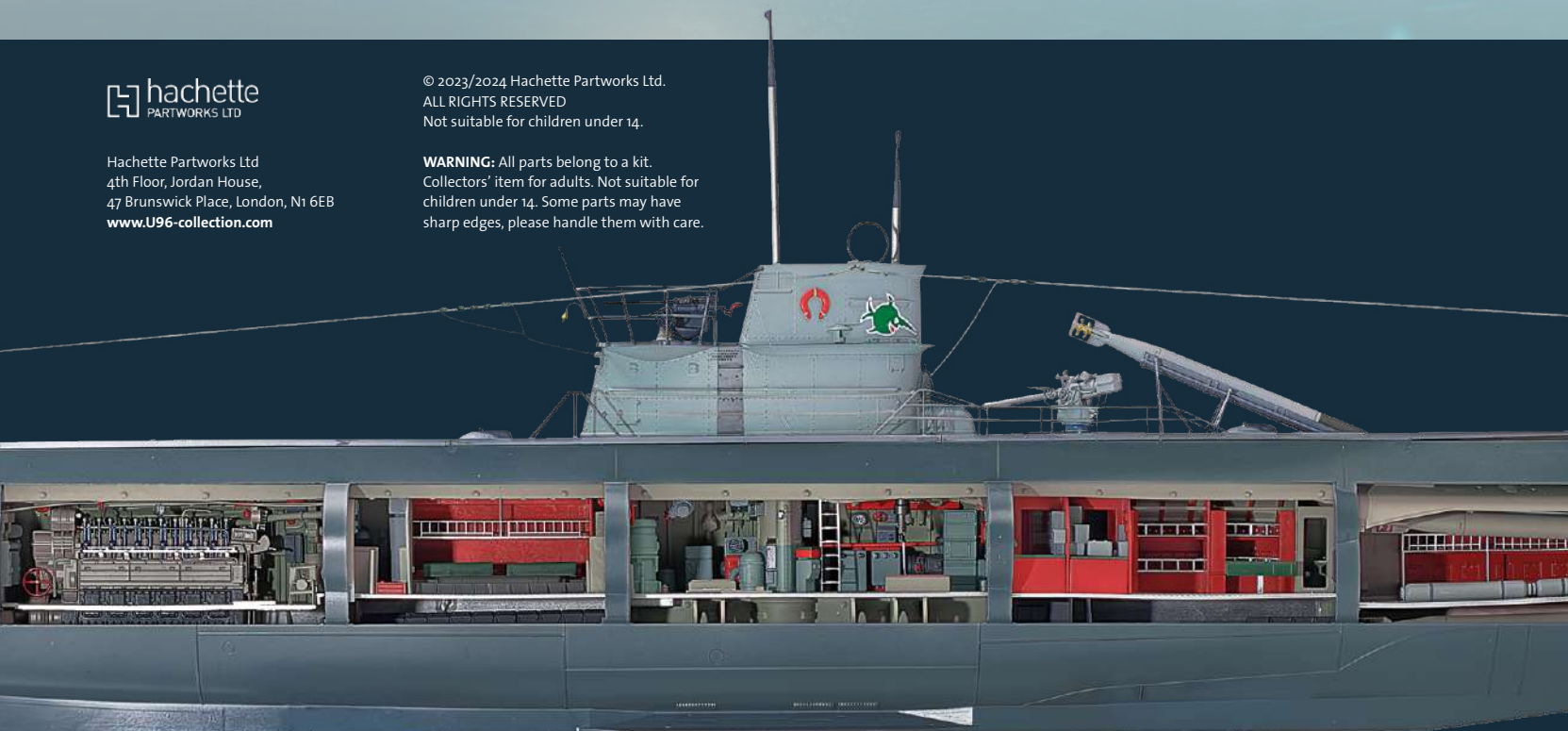
Kit 96: The next motor



Hachette Partworks Ltd
4th Floor, Jordan House,
47 Brunswick Place, London, N1 6EB
www.U96-collection.com

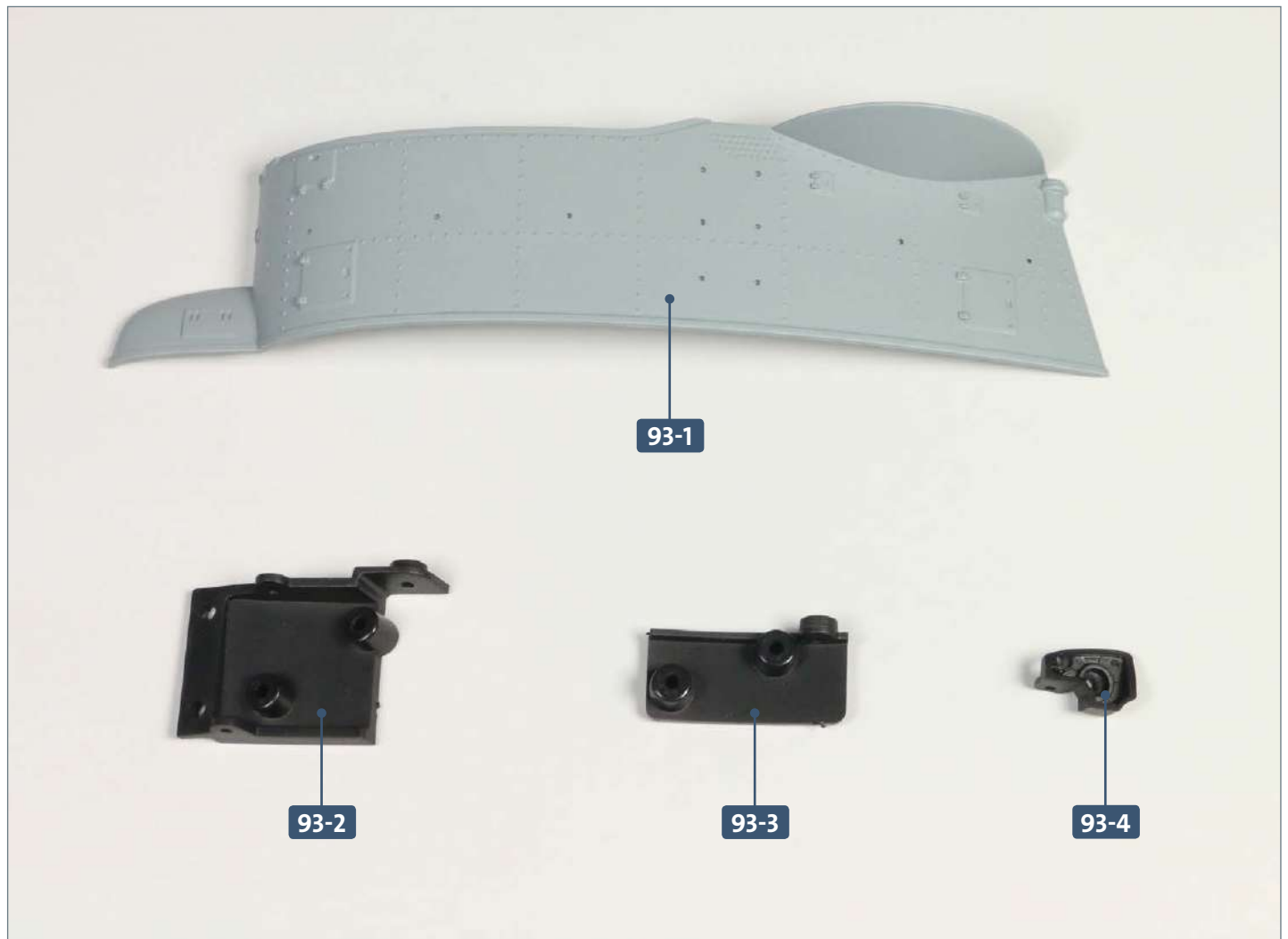
© 2023/2024 Hachette Partworks Ltd.
ALL RIGHTS RESERVED
Not suitable for children under 14.

WARNING: All parts belong to a kit.
Collectors' item for adults. Not suitable for
children under 14. Some parts may have
sharp edges, please handle them with care.

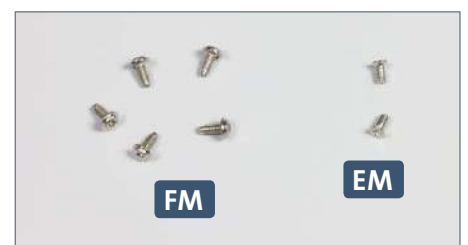


Kit 93: Lower port half of tower

In this kit, three connectors are attached to the portside (L) of the tower.



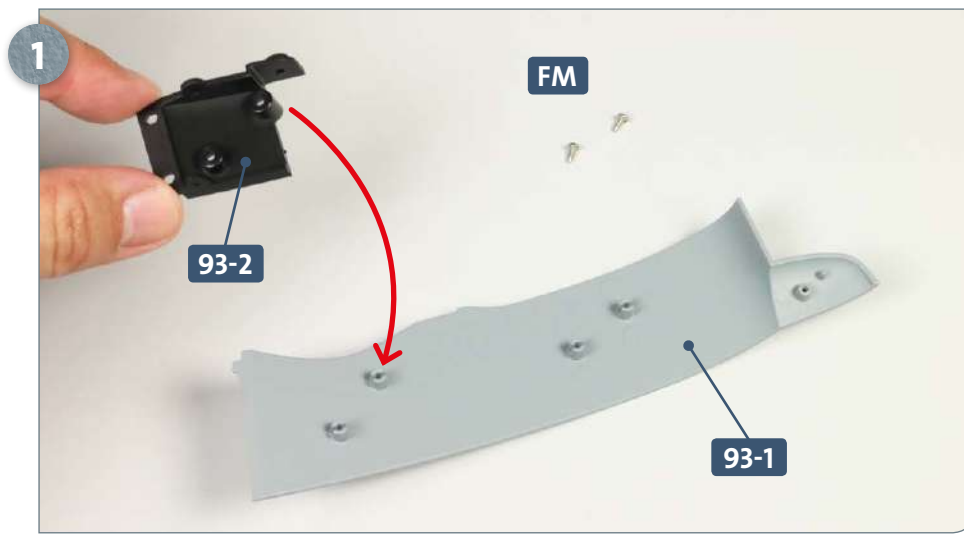
Parts reference list	
Part no.	Name
93-1	Lower portside (L) of tower
93-2	Connector (L-1)
93-3	Connector (L-2)
93-4	Connector (L-3)



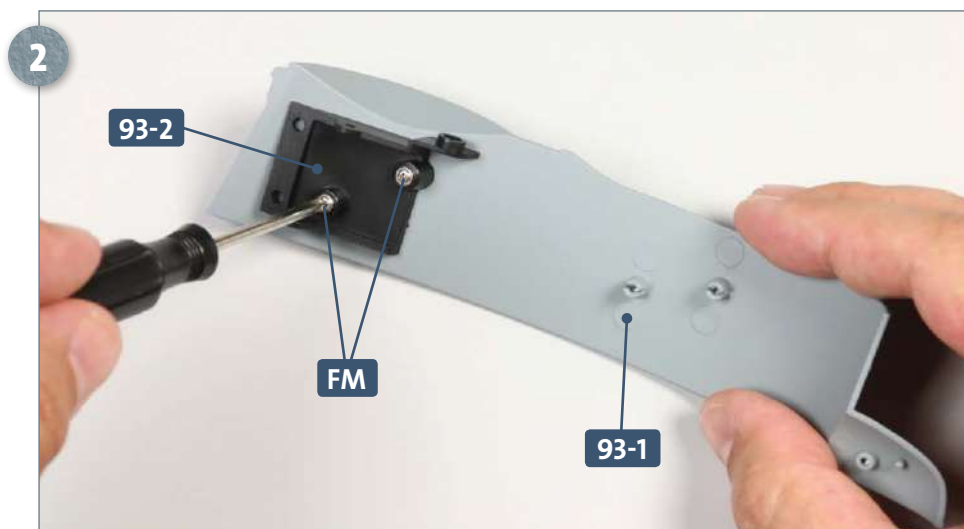
Screws		
Ref.	No.	Dimensions
FM	4 + 1	2 x 4 mm (PWD)
EM	1 + 1	2 x 4 mm (KM)

Kit 93: Lower part half of tower

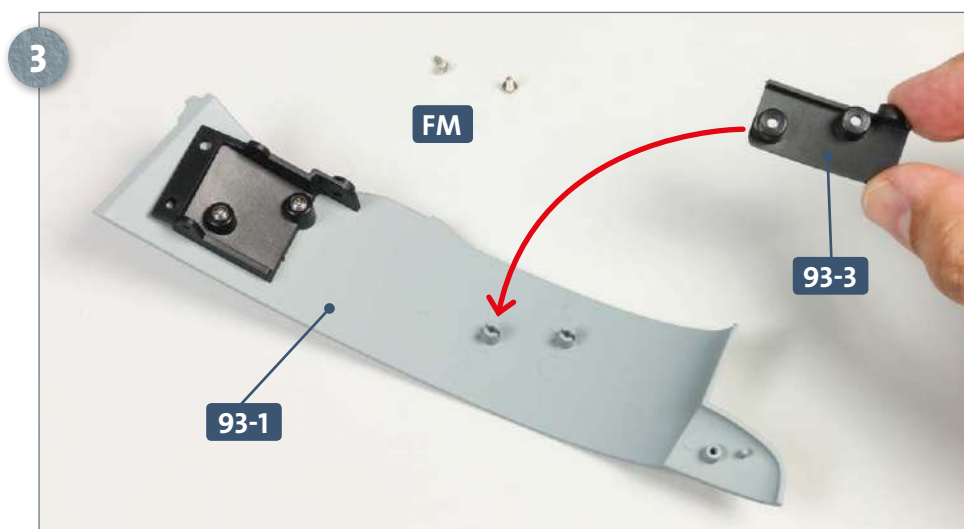
STAGE 1 → Adding the connectors



Place the portside half of the tower **93-1** with the inside facing upwards on your work surface. Place two **FM** screws next to it. Take connector **93-2**, position it as shown, and fit it onto the raised sockets at the aft area of the tower, as indicated by the arrow.

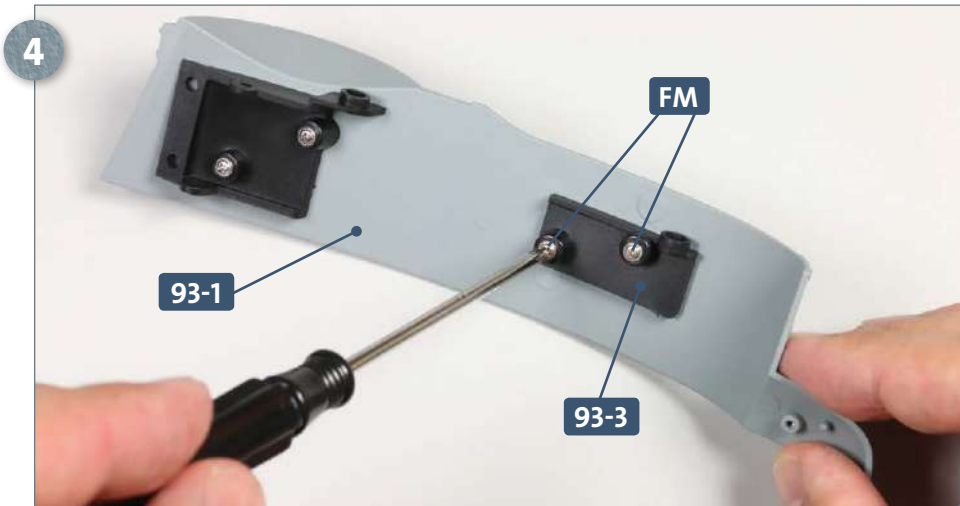


Attach the connector **93-2** using the two **FM** screws.



Have ready two more **FM** screws. Take connector **93-3** and fit it to the raised sockets at the forward area of the tower **93-1**, as shown.

Kit 93: Lower half of tower



Attach the connector **93-3** to the tower **93-1** using the two **FM** screws.



Connector **93-4** is placed at the forward end of the bulge in the tower **93-1** and fastened with an **EM** screw, as shown in the photo.

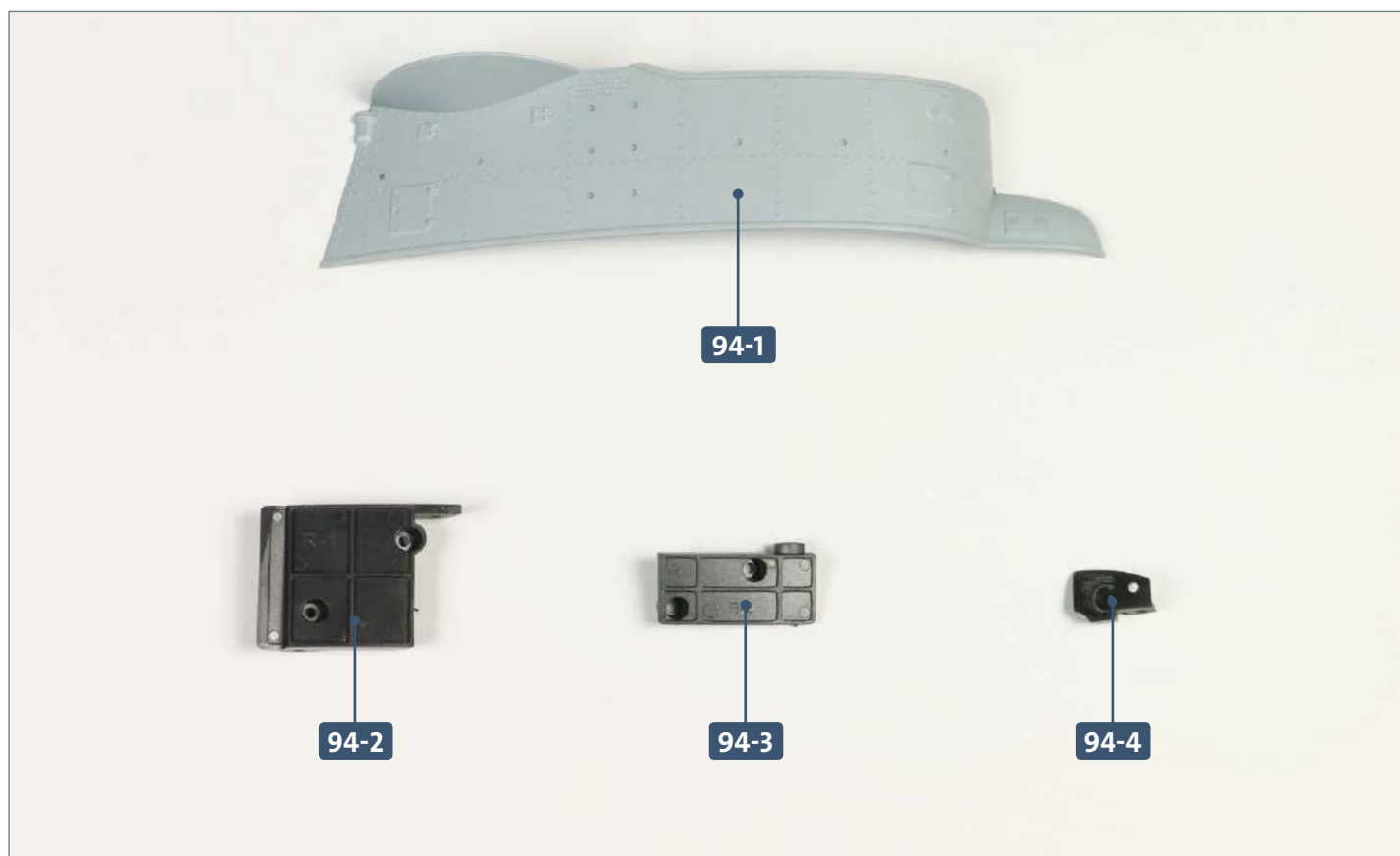
COMPLETED WORK



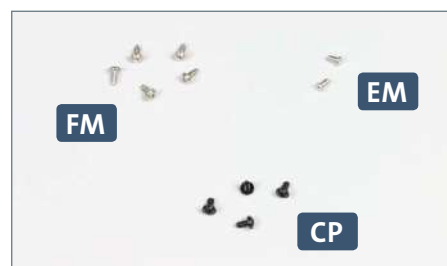
Three connecting parts have now been attached to the portside (L) half of the tower.

Kit 94: Lower starboard half of tower

In this kit, three connectors are attached to the starboard (R) half of the tower, before the two halves of the tower are joined together.

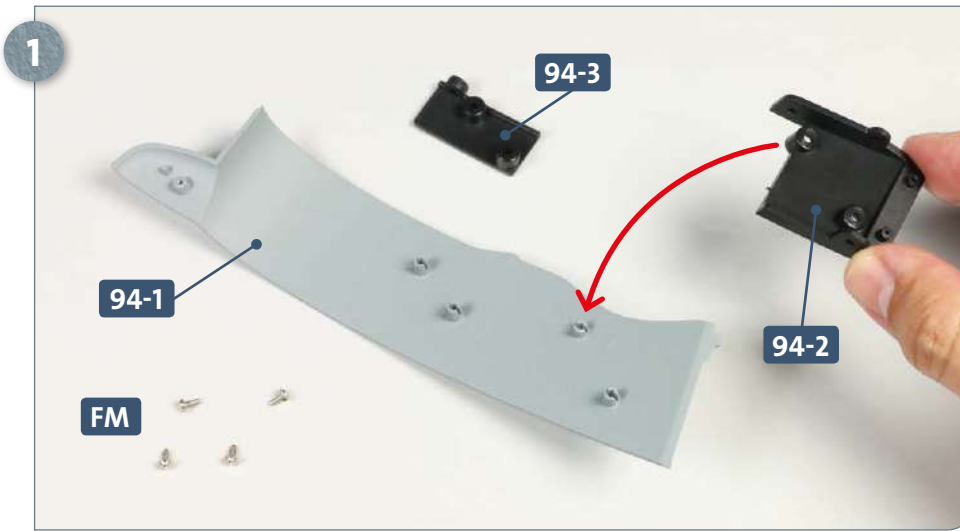


Parts reference list	
Part no.	Name
94-1	Lower starboard (R) half of tower
94-2	Connector (R-1)
94-3	Connector (R-2)
94-4	Connector (R-3)

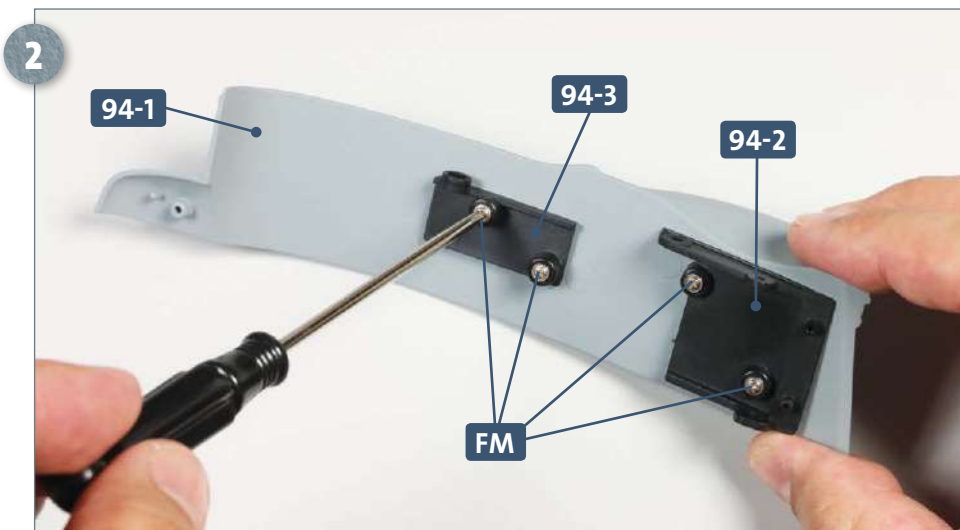


Screws		
Ref	No.	Dimensions
FM	4 + 1	2 x 4 mm (PWD)
EM	1 + 1	2 x 4 mm (KM)
CP	3 + 1	2 x 4 mm (PWB)

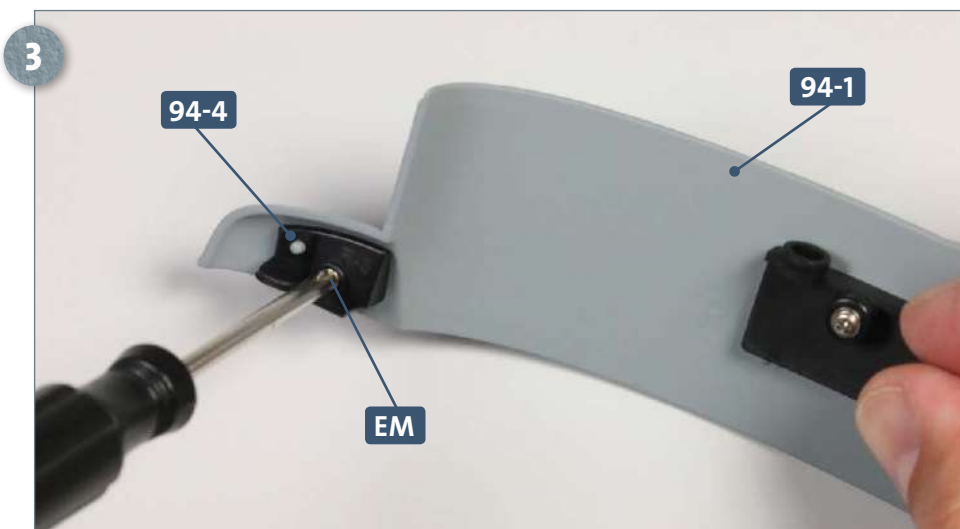
STAGE 1 → Attaching the connectors



Place the starboard (R) section of the tower **94-1** on your work surface with the inside facing upwards. Next to it, place the two connectors **94-2** and **94-3** and four **FM** screws. Take connector **94-2**, position it as shown, and fit it to the raised sockets in the aft area of the tower section, as indicated by the arrow.



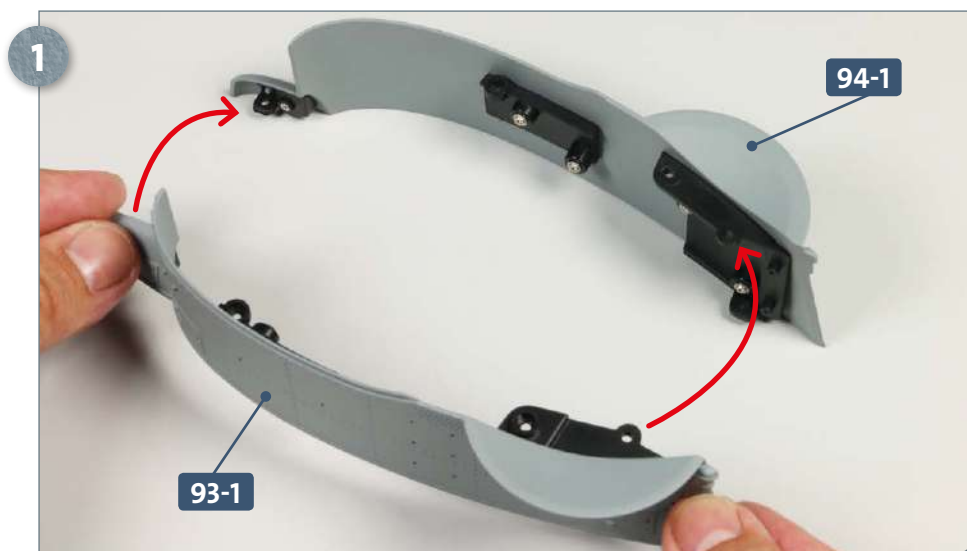
Fix the connector **94-2** in position using two **FM** screws. Next, place connector **94-3** further forward on the tower section **94-1** and fasten it in place using the two remaining **FM** screws.



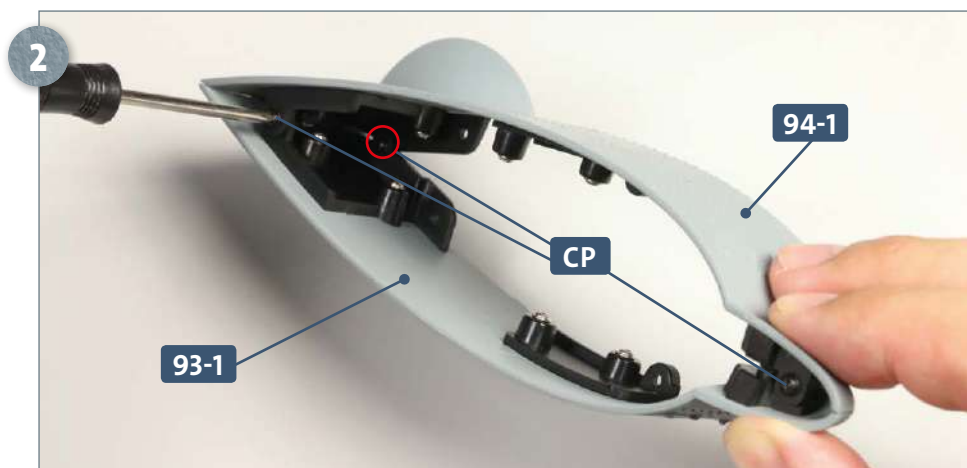
Place connector **94-4** at the forward edge of the bulge in the tower section and fasten it in place using an **EM** screw, as pictured.

Kit 94: Lower starboard half of tower

STAGE 2 → Joining the halves of the tower



Take the port (L) side of the tower **93-1**, which you worked on in the previous kit, and join it to the starboard (R) section **94-1**, as indicated by the two arrows.



Turn the assembly over and attach the two halves **93-1** and **94-1** together by screwing a **CP** screw into the holes where the three connectors overlap. Note that one of the screws is fitted towards the bottom of the assembly (see red circle).

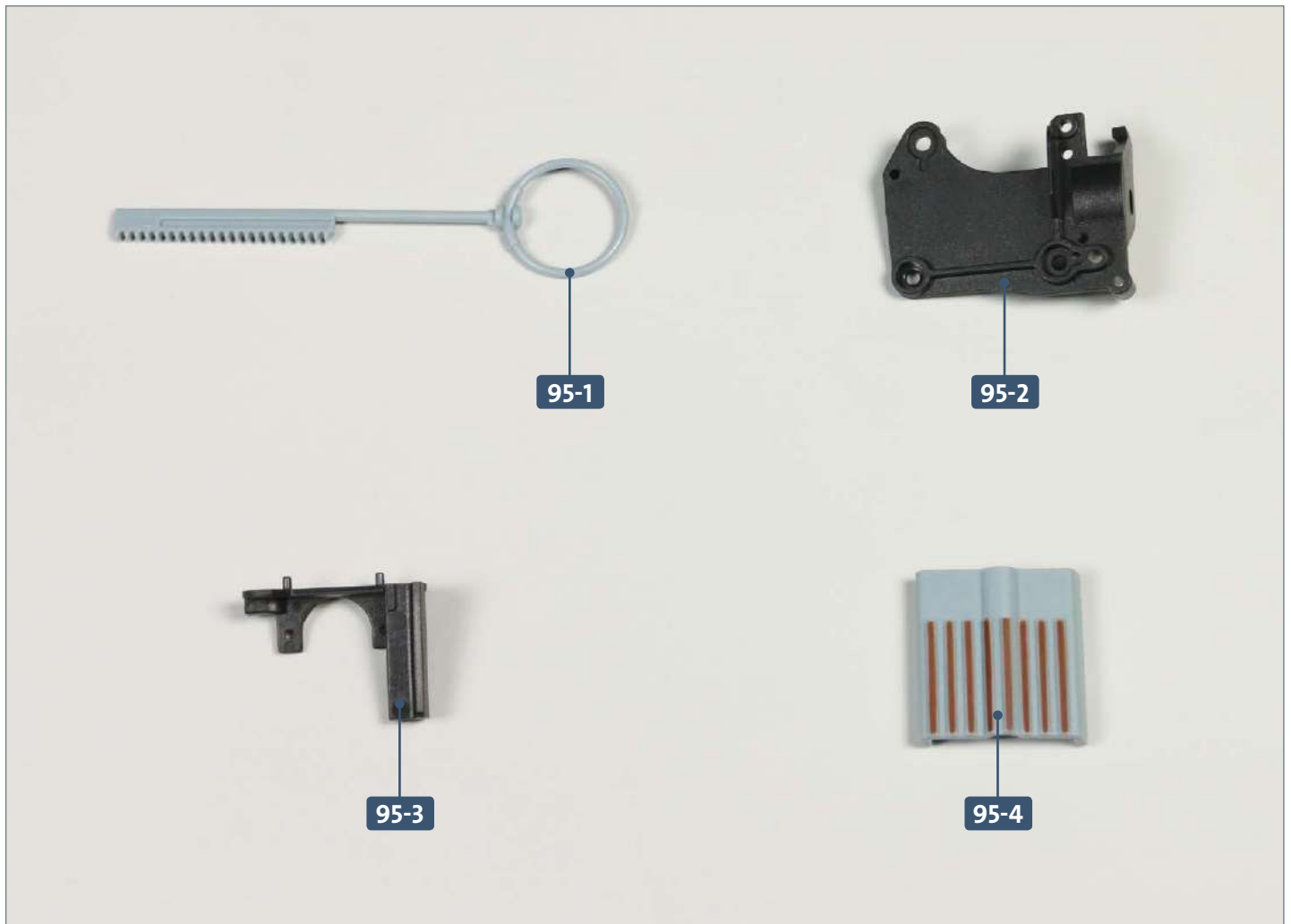
COMPLETED WORK



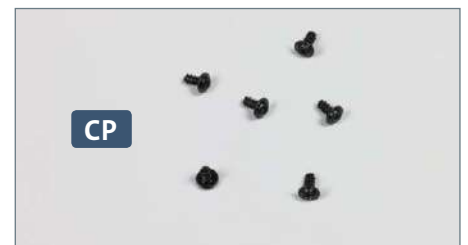
Three connectors have now been attached to the starboard (R) section of the tower, before joining the port (L) and starboard (R) sides together.

Kit 95: Bearing frame for radio

In this kit, a bracket, a guide for the radio bearing frame, and a fairing piece are all attached to the upper turret assembly that you worked on in kit 5.



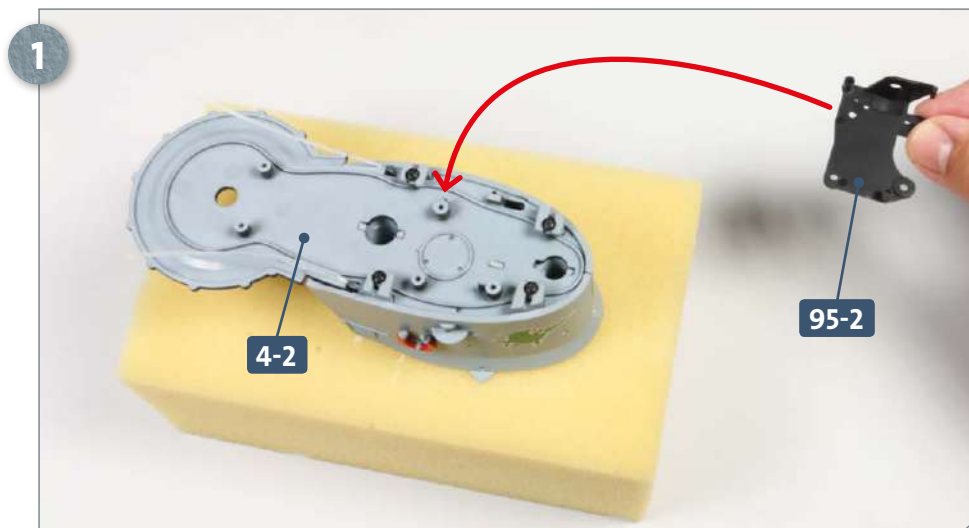
Parts reference list	
Part no.	Name
95-1	Bearing frame
95-2	Bracket
95-3	Guide
95-4	Fairing piece



Screws		
Ref	No.	Dimension
CP	5 + 1	2 x 4 mm (PWB)

Kit 95: Bearing frame for radio

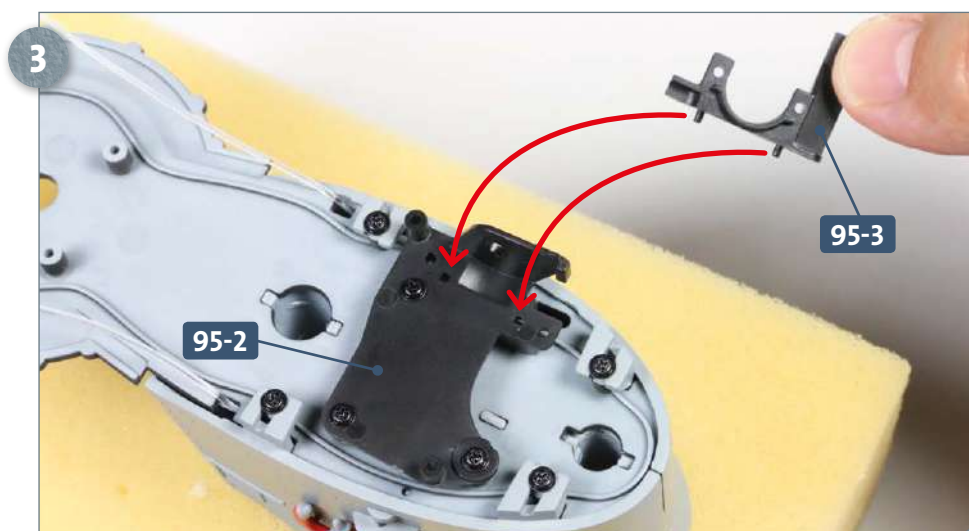
STAGE 1 → Work on the upper turret assembly



Take the upper turret assembly that you last worked on in kit 5. Carefully turn it upside down, ideally placing it on a soft surface so that the delicate components on top are not damaged. Fit the bracket **95-2** to the three raised sockets in the forward section of the bridge deck **4-2**, as indicated by the arrow.



Fix the bracket **95-2** in place using three **CP** screws.

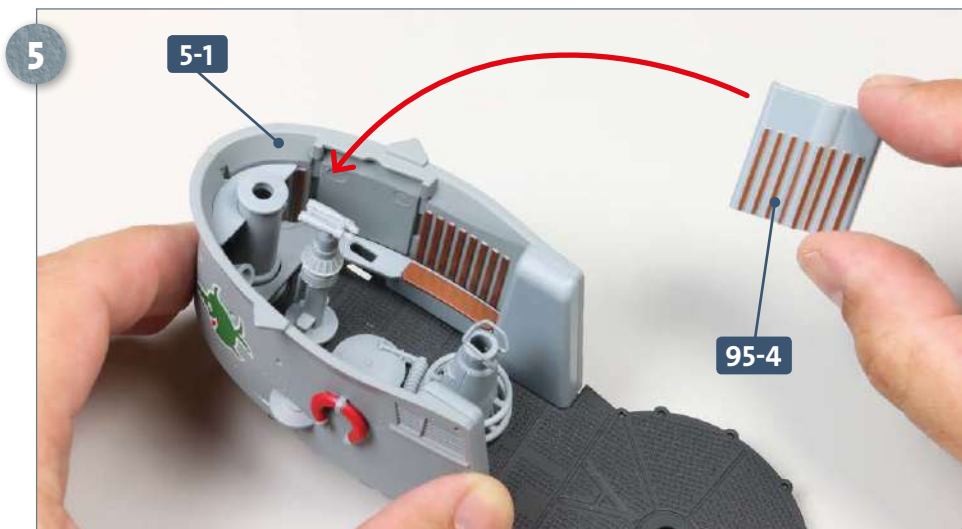


Take the guide **95-3** and insert its two pegs into the holes in the bracket **95-2**, shown by the two arrows.

Kit 95: Bearing frame for radio

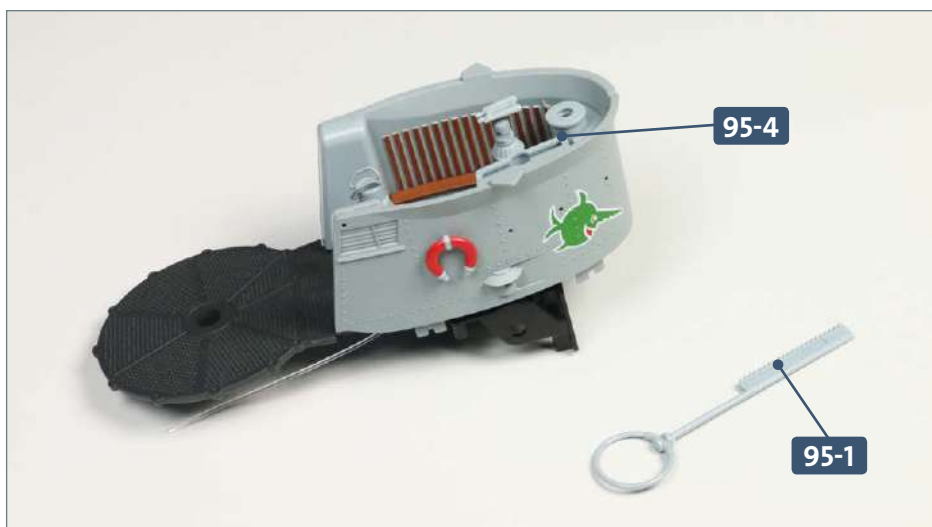


Fasten the guide **95-3** to the bracket **95-2** using two **CP** screws.



Turn the upper turret assembly over. Taking the fairing piece **95-4**, apply some glue to its two long pegs, and attach them to the slots on the inside of the starboard (R) bulwark **5-1**, as pictured. When fitted in place, the fairing part **95-4** forms the slot for the direction-finding radio frame – see photograph below.

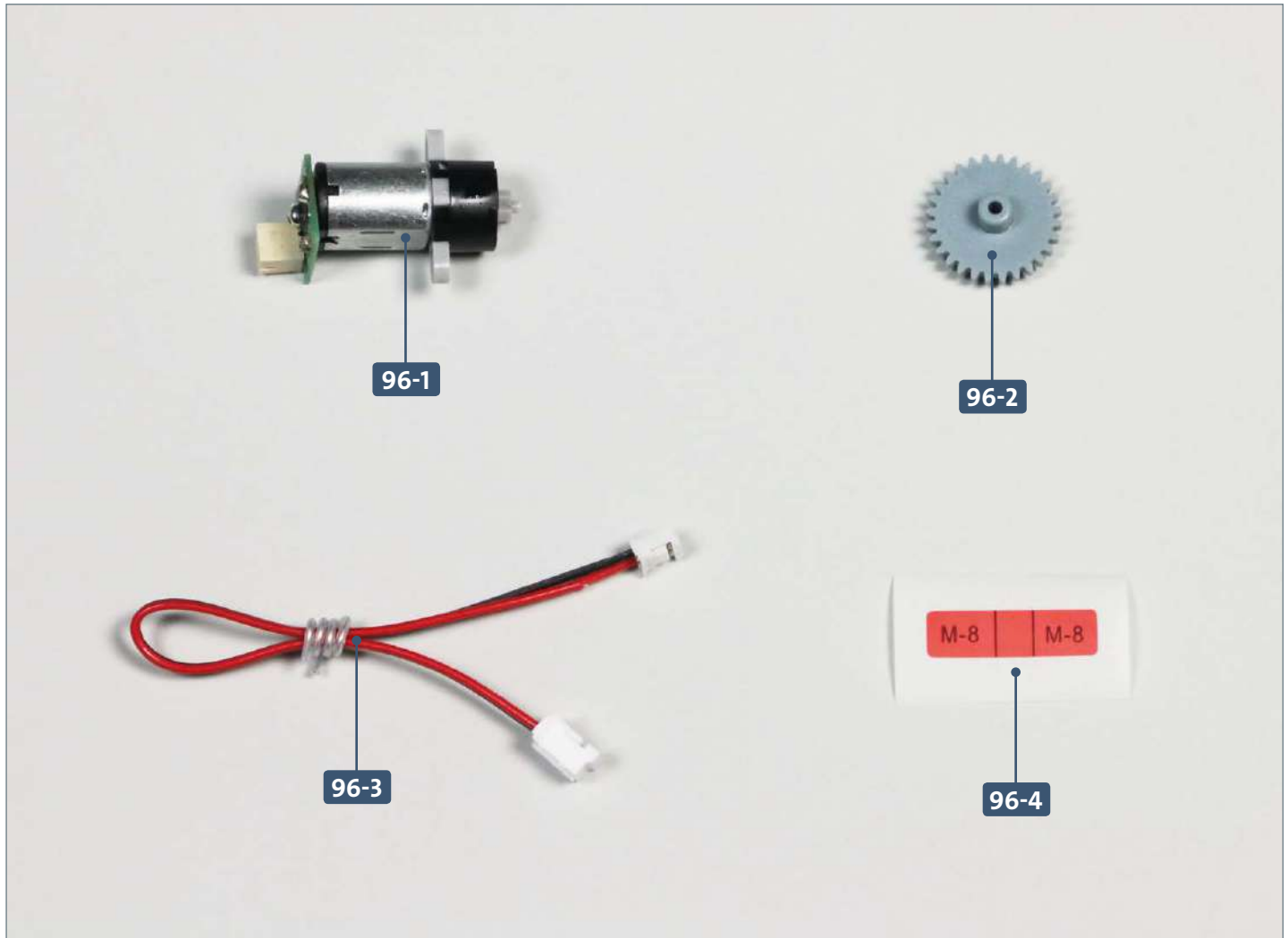
COMPLETED WORK



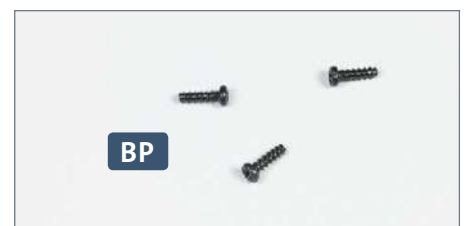
A bracket, guide and fairing piece have all now been attached to the upper turret assembly. The bearing frame for the direction-finding radio (95-1) will be fitted in a later kit. Keep it somewhere safe in the meantime.

Kit 96: The next motor

In this kit, a motor for the direction-finding radio frame is connected with a cable, fitted with a cog and attached to the underside of the upper turret assembly.

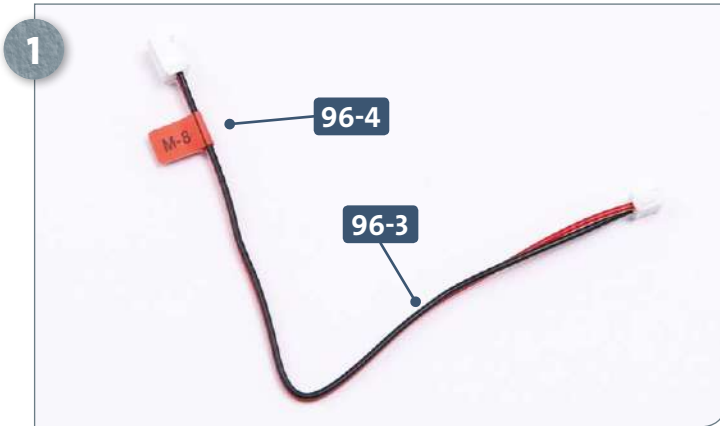


Parts reference list	
Part no.	Name
96-1	Motor
96-2	Cog
96-3	Cable
96-4	Cable label

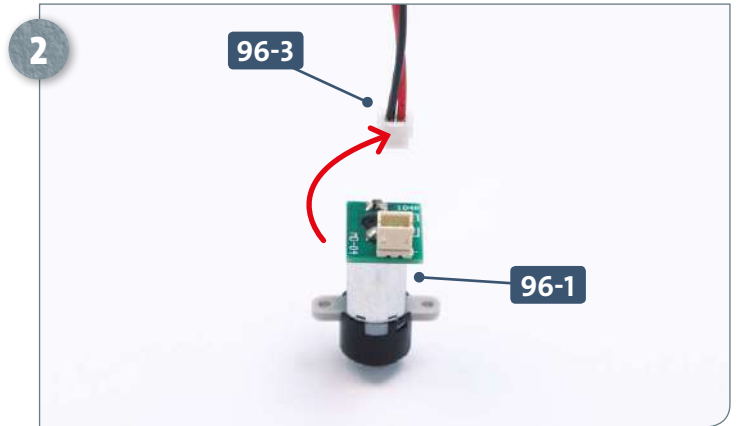


Screws		
Ref	No.	Dimensions
BP	2 + 1	1.7 x 6 mm

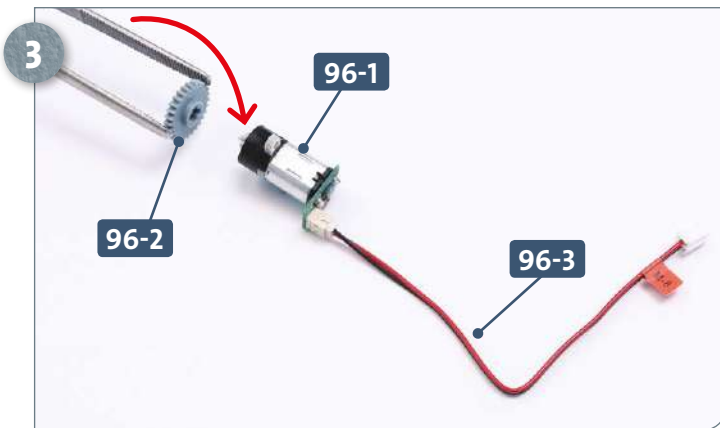
STAGE 1 → Attaching the radio frame and motor to the turret assembly



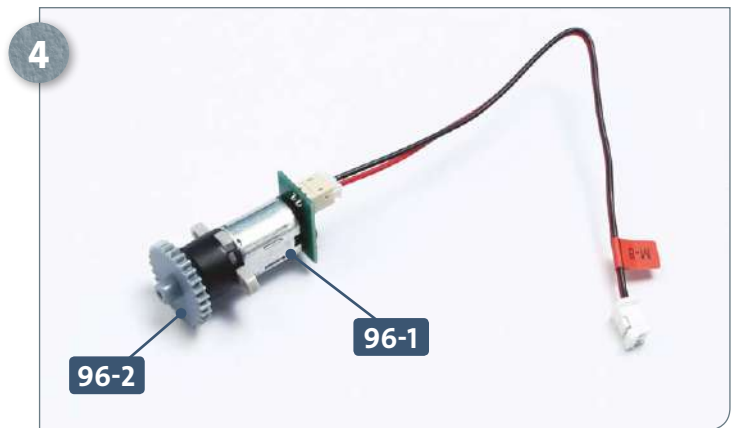
Take the cable **96-3** and cable label **96-4**. Remove the cable label that reads **M-8** from the backing film and attach it to the cable at the end with the larger connector.



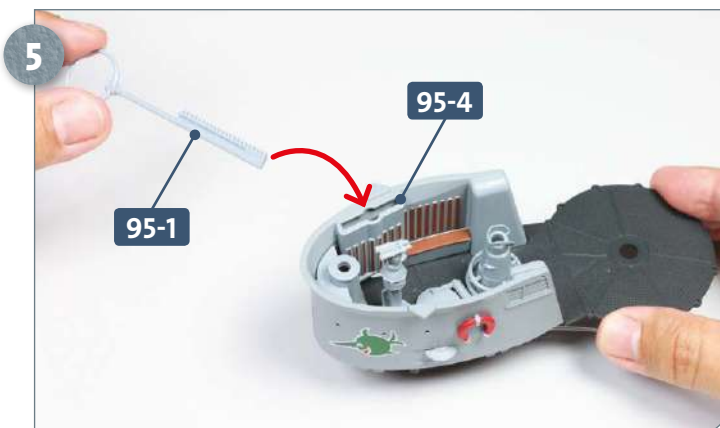
Take the motor **96-1** and connect the terminal of its circuit board to the smaller connector of the cable **96-3**, as shown by the arrow.



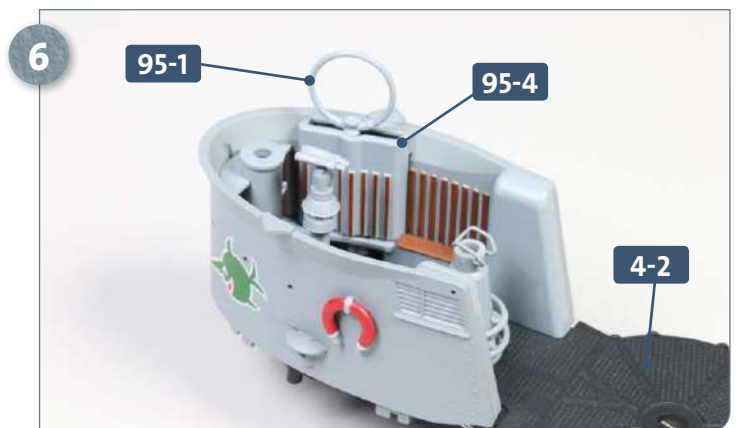
After fitting the cable **96-3** to the circuit board of the motor **96-1**, take the cog **96-2** and fit it onto the hub of the motor **96-1**, as shown.



This photo shows the cog **96-2** correctly fitted onto the motor **96-1**.

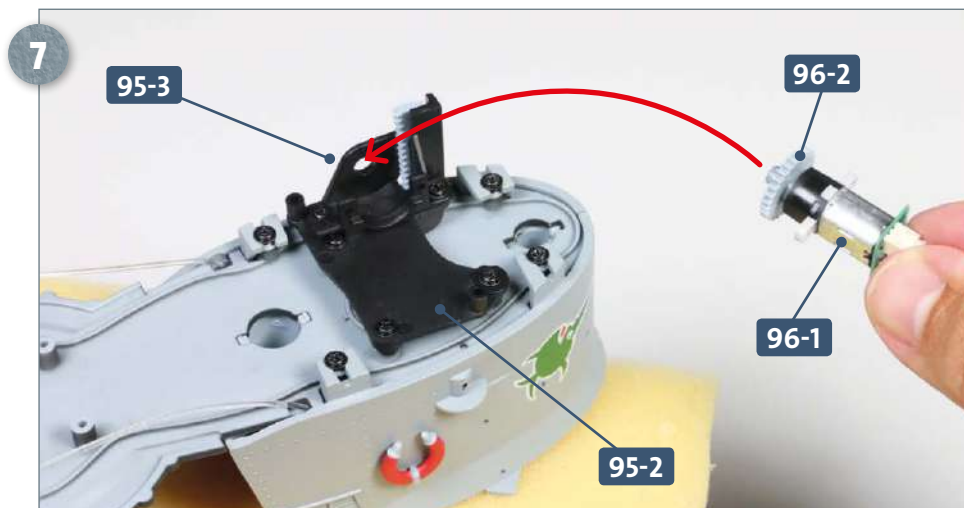


Place the upper turret assembly on your work surface. After noting the orientation of the bearing frame **95-1**, slot it into the opening formed by the fairing part **95-4** and the bulwark. It is important to also see step 7.

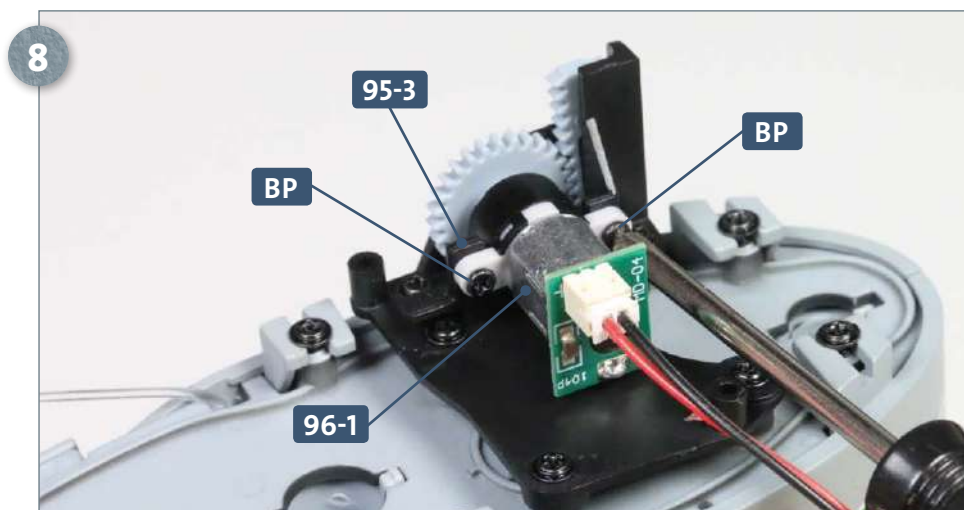


The frame for the direction-finding radio **95-1** fits in the slot between the fairing piece **95-4** and the bulwark. The lower end fits through the opening in the bridge deck **4-2**.

Kit 96: The next motor

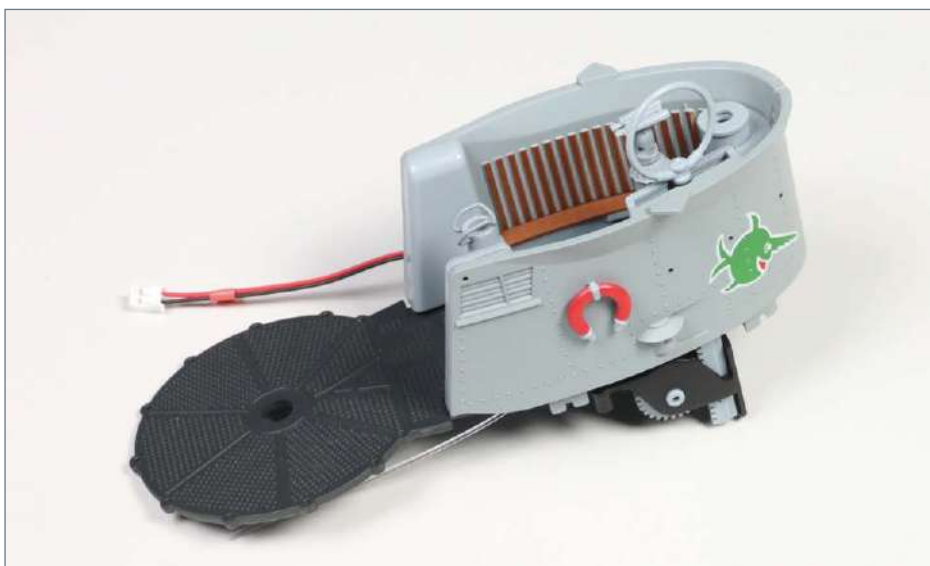


This photo shows the view of the fitted bearing frame for the radio 95-1 from below. If the frame gets stuck when being slotted in, loosen the two screws securing the guide 95-3 and temporarily remove it. Once the frame is inserted, reattach the guide. Next, take the motor assembly and insert the attached cog 96-2 into the large opening in the bracket 95-2, as indicated by the arrow.



Attach the motor 96-1 to the guide 95-3 with two BP screws.

COMPLETED WORK



The bearing frame for the direction-finding radio has now been fitted to the upper turret assembly and is connected to a motor.